



Weather-Resistant Battery Clocks Metal Case



FEATURES

- 1 Year Warranty
- Sweep second hand
- AA battery movement
- Heavy-duty all metal case
- Durable powder coat finish
- Non-corrective
- Optional Battery Booster

GENERAL

american time™ Weather-Resistant battery clocks are modern non-corrective clocks designed to be durable, dependable and easy to read. They are available in several sizes and colors.

DESCRIPTION

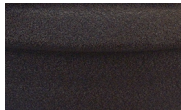
Clock bezels are constructed of durable, 21 gauge cold rolled steel, manufactured to specific high quality standards, with a durable powder coat finish. Dials are laminated plastic to resist warping. Shatter-resistant crystals resist scratching and discoloration. The hour and minute hands are black aluminum. Sweep second hand is red aluminum.

Quartz-based battery movements use one AA alkaline battery. Movements are enclosed in a plastic cover to protect against dust and water. Optional Battery Booster Plus® uses six AA batteries and extends clock operation for 5+ years.

ORDERING INFORMATION

Part #	Description	With Battery Booster	
		Part #	Description
R54BWDD989	12" Round, surface, Black Sand, plexiglass	R54BWDD989BP	12" Round, surface, Black Sand, plexiglass
R54GWDD989	12" Round, surface, Steel Gray, plexiglass	R54GWDD989BP	12" Round, surface, Steel Gray, plexiglass
R64BWDD989	15" Round, surface, Black Sand, plexiglass	R64BWDD989BP	15" Round, surface, Black Sand, plexiglass
R74BWDD989	18" Round, surface, Black Sand, plexiglass	R74BWDD989BP	18" Round, surface, Black Sand, plexiglass
R84BWDD989	24" Round, surface, Black Sand, polycarbonate	R84BWDD989BP	24" Round, surface, Black Sand, polycarbonate

BEZEL FINISHES



Black Sand=BW

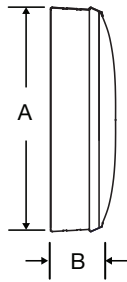


**Steel Gray=GW
(12" only)**

SPECIFICATIONS

Operating voltage	1.5vdc
Operating voltage range	1.2 to 1.7vdc
Current consumption	12" approx. 0.11mA; 15" 130mA
Motor output frequency	1 Hz
Operating temp range	23°F to 122°F (-5°C to +50°C)
Accuracy	Typical ± 1 Sec/Day
Nominal torque at 1.5vdc	12" @1.5vdc=0.4 g/cm; 15" @1.35vdc=50 μ Nm
Quartz frequency	32.768 kHz

Steel
surface mount



OUTSIDE DIMENSIONS

"A" Dimensions:

13¹/₄" for 12" clocks
16¹/₄" for 15" clocks
19" for 18" clocks
24¹/₂" for 24" clocks

"B" Dimensions: Surface

2¹/₄" for 12" clocks
2¹/₄" for 15" clocks
3¹/₄" for 18" clocks
4¹/₂" for 24" clocks

At American Time, we continually strive to improve our products to meet our customers' needs and to provide the best possible value. The above specifications are believed to be correct, are subject to change without notice and may otherwise vary from the above. Please call if you need verification of any specifications or the suitability of a particular product for a particular application.

© American Time