



FEATURES

- 5 Year Warranty
- Automatic adjustment for Daylight Saving Time
- Impact-resistant plastic case, with built-in hanger
- Shatter-resistant polycarbonate crystal
- Sweep second hand
- Double dial mounting available
- AA battery movement
- Battery Booster (optional)

GENERAL

The **american time**™ AllSet battery clocks, with optional Battery Booster, are ideal for schools, hospitals, and state and federal buildings. Clocks are provided in a round high-impact black plastic case with shatter-resistant safety crystal and bold, black numerals and minute markers on a non-yellowing white dial. Stylish hour and minute hands are aluminum with a black finish and a red sweep hand. Optional bezel colors available.

DESCRIPTION

The AllSet quartz clock movement features a microchip with an internal battery that keeps track of the current date and time. The microchip is programmed to make the daylight saving time change at 03:00 am Eastern, 02:00 am Central, 01:00 am Mountain and 12:00 Pacific time twice a year. In the Spring, the movement will move the hands forward one hour, at an accelerated speed, to achieve the advance of one hour. In the Fall, the movement will automatically stop moving the hands for one hour and start ticking again when the clock is on time, to adjust back to standard time.

Clocks use a quartz-based battery movement which uses one AA alkaline battery. The optional Battery Booster holds six AA batteries in parallel which extends maintenance-free clock operating life 5+ years.

Note: Time must be manually set at startup and after replacing the batteries. Internal time/date is only used for moving hands for DST changes.

ORDERING INFORMATION

Part #	Description	
Stand-Alone		With Battery Booster
E56BAQD304	12" Rd surface mount	E56BAQD304BP
E55BAQD?04	12" Rd flush mount	E55BAQD?04BP
E93BAQD204	12" Rd double dial wall mount	E93BAQD204BP
E92BAQD204	12" Rd double dial ceiling mount	E92BAQD204BP
E66BAQD304	15" Rd surface mount	E66BAQD304BP
E63BAQD204	15" Rd double dial wall mount	E63BAQD204BP
E62BAQD204	15" Rd double dial ceiling mount	E62BAQD204BP

Note: If flush mounting in an existing backbox, change the ? in the Part # to specify correct hanger type from the list below:

1=National Time 5=Simplex®, Dukane, Lathem 6=Cincinnati, Edwards, Faraday, Honeywell 8=Standard™ Electric

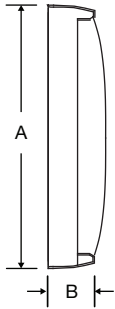
Note: Other dial styles and case colors available.

Note: Personalized dial option available. Add L to the end of the Part #.

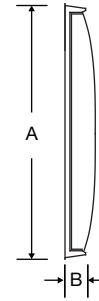
SPECIFICATIONS

Operating voltage: 1.5vdc
 Operating voltage range: 1.3 to 1.7vdc
 Operating temp range: 14°F to 122°F (-10°C to +50°C)
 Accuracy typical: ±1 Sec/Day
 Nominal torque at 1.5vdc: 1.5 g/cm @ second shaft

Surface mount plastic



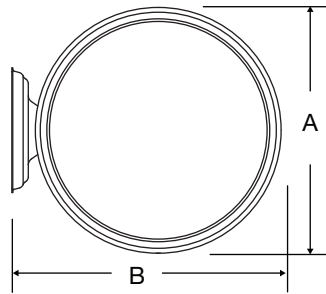
Flush mount plastic



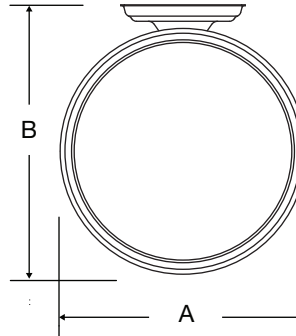
OUTSIDE DIMENSIONS

SIZE	A	B	C
Surface			
12"	13¼"	2½"	NA
15"	16"	2½"	NA
Flush			
12"	13¼"	2"	NA
Double Dial			
12"	13¼"	15"	8 ⁵ / ₈ "
15"	16"	19¼"	8 ⁵ / ₈ "

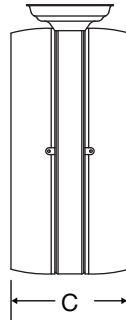
Wall mount plastic double dial



Ceiling mount plastic double dial



Plastic double dial profile



At American Time, we continually strive to improve our products to meet our customers' needs and to provide the best possible value. The above specifications are believed to be correct, are subject to change without notice and may otherwise vary from the above. Please call if you need verification of any specifications or the suitability of a particular product for a particular application. © American Time