

Secondary Clocks
Synchronous-Wired Corrective
60th Minute Metal Case
Manufactured in Dassel, MN



FEATURES

- **2 Year Warranty**
- Dual automatic clock correction cycles
 - > Hourly correction
 - > 12-hour scatter correction
- Quality heavy-duty brass gear train
- Precision 'Hysteresis' type *Synchron* motor
- Attractive Modern Design
- Heavy-duty construction
- All metal case
- Double dial mounting

GENERAL

The **american time**[™] Synchronous-Wired corrective clocks are used with the AllSync IQ[®] master clocks to provide continuous accurate time indication. The secondary clocks are provided in round or square black powder coated metal bezels with glass crystals and bold, black numerals and minute markers on a non-yellowing white dial. Stylish hour and minute hands are aluminum with a black finish and a red sweep second hand.

DESCRIPTION

american time[™] clocks may be surface, flush or double dial mounted and are available in 10", 12", 15" or 18" round and 12" square. Once each hour the master clock supervises the accuracy of the secondary clock system by issuing a 25 second signal that will correct secondary clocks up to 59 minutes slow. Every twelve hours the master issues a supervisory signal to correct units up to 11 hours, 59 minutes slow. The reference time for the hourly correction is the 60th minute. Twelve-hour correction occurs between 6:00 and 7:00 twice daily. Flush mount clocks require a flush backbox. Each clock is supplied with a pair of Molex[®] connectors.

ORDERING INFORMATION

Part #	Description	Part #	Description
G44BHAG491	10" Rd Surface 120vac	G44BHBG491	10" Rd Surface 24vac
G45BHAG191	10" Rd Flush 120vac	G45BHBG191	10" Rd Flush 24vac
G54BHAG491	12" Rd Surface 120vac	G54BHBG491	12" Rd Surface 24vac
G55BHAG191	12" Rd Flush 120vac	G55BHBG191	12" Rd Flush 24vac
G57BHAG491	12" Sq Surface 120vac	G57BHBG491	12" Sq Surface 24vac
G58BHAG191	12" Sq Flush 120vac	G58BHBG191	12" Sq Flush 24vac
G64BHAG491	15" Rd Surface 120vac	G64BHBG491	15" Rd Surface 24vac
G65BHAG191	15" Rd Flush 120vac	G65BHBG191	15" Rd Flush 24vac
G74BHAG491	18" Rd Surface 120vac	G74BHBG491	18" Rd Surface 24vac
G75BHAG191	18" Rd Flush 120vac	G75BHBG191	18" Rd Flush 24vac
G52BHAG291	12" Rd DDC 120vac	G52BHBG291	12" Rd DDC 24vac
G53BHAG291	12" Rd DDW 120vac	G53BHBG291	12" Rd DDW 24vac
G50BHAG291	12" Sq DDC 120vac	G50BHBG291	12" Sq DDC 24vac
G51BHAG291	12" Sq DDW 120vac	G51BHBG291	12" Sq DDW 24vac
G62BHAG291	15" Rd DDC 120vac	G62BHBG291	15" Rd DDC 24vac
G63BHAG291	15" Rd DDW 120vac	G63BHBG291	15" Rd DDW 24vac

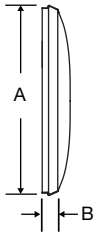
CFB101 10", 12", 15", 18" Flush backbox

Double dial mounting requires a 4" square electrical box in the wall or ceiling.

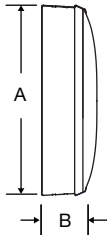
SPECIFICATIONS

Operating voltage 120vac 60 Hz motor = .033 amps Correction coil = .022 amps
 24vac 60 Hz motor = .144 amps Correction coil = .094 amps

Steel flush mount



Steel surface mount



OUTSIDE DIMENSIONS

"A" Dimensions:
 11 $\frac{1}{4}$ " for 10" clocks
 13 $\frac{1}{4}$ " for 12" clocks
 16 $\frac{1}{4}$ " for 15" surface clocks
 16" for 15" flush clocks
 19" for 18" clocks

"B" Dimensions: Surface
 2 $\frac{1}{4}$ " for 10", 12", 15"
 3 $\frac{1}{4}$ " for 18" clocks

"B" Dimensions: Flush
 1 $\frac{5}{8}$ " for 10", 12", 15"
 1 $\frac{7}{8}$ " for 18" clocks

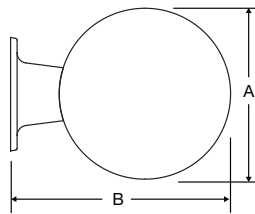
Double Dial:
Note: includes 2 surface clocks

"A" Dimensions:
 13 $\frac{1}{4}$ " for 12" clocks
 16 $\frac{1}{4}$ " for 15" clocks

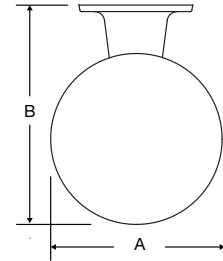
"B" Dimensions:
 16 $\frac{7}{8}$ " for 12" clocks
 19 $\frac{7}{8}$ " for 15" clocks

"C" Dimensions:
 8" for 12" & 15" clocks

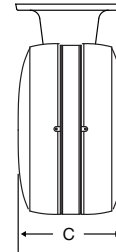
Wall mount round steel double dial



Ceiling mount round steel double dial



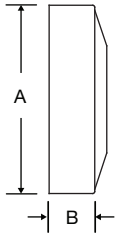
Steel double dial profile



Flush mount steel square



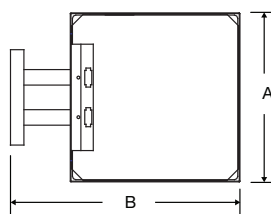
Surface mount steel square



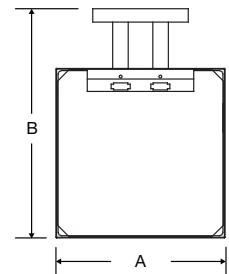
Square 12" only OUTSIDE DIMENSIONS

Flush
"A" Dimensions:
 12 $\frac{5}{8}$ "
"B" Dimensions: Surface
 3 $\frac{1}{4}$ "
"B" Dimensions: Flush
 1 $\frac{5}{8}$ "
"B" Dimensions: Double Dial
 17 $\frac{1}{8}$ "
"C" Dimensions: Flush
 6 $\frac{5}{8}$ "

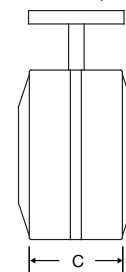
Wall mount steel square double dial mechanical



Ceiling mount steel square double dial mechanical



Steel square double dial profile



At American Time, we continually strive to improve our products to meet our customers' needs and to provide the best possible value. The above specifications are believed to be correct, are subject to change without notice and may otherwise vary from the above. Please call if you need verification of any specifications or the suitability of a particular product for a particular application.

© American Time