



#### FEATURES

- **3 Year Warranty**
- Microprocessor controlled movement
- 15 minutes of backup power (no batteries required)
- Accuracy to within  $\pm 1$  second of a master clock
- Reduced power consumption
- Attractive modern design
- Heavy-duty construction
- Metal case
- Diagnostic LED

#### DESCRIPTION

The **american time**® AllSync Plus clocks are provided in round or square metal cases with glass crystals and bold, black numerals and minute markers on a non-yellowing white dial. Stylish hour and minute hands are aluminum with a black finish and a red sweep second hand.

AllSync Plus clocks are designed to work with multiple master clocks and correction signals. This unit is programmed to identify the signal it receives from the master and operate as that style of clock. Changing clock operation from one style to another is as easy as unplugging the clock from one system and plugging it into another. If needed, changing the placement of two small jumpers on the circuit board can change the voltage required to run this clock from 120vac to 24vac or 24vac to 120vac. This clock provides 15 minutes of backup run power without the use of batteries. If a power outage should last longer than 15 minutes, the clock will synchronize to the master clock at the hourly and 12 hour correction cycles.

#### Correction Signals

Works on:

- Hourly correction: 7-9 seconds starting at the 57th minute and 54th second. 12 hour correction: 13-18 seconds starting at 5:57:54 (am and pm).
- Hourly correction: 24-28.5 seconds starting at the 0 minute and 0 second. 12 hour correction: 24-32 minutes starting at 6:00:00 (am and pm).
- \*Hourly correction: 54-56 seconds starting at the 58th minute and 5th second. 12 hour correction: 10 pulses of 94-96 seconds starting at 5:05:00 (am and pm) and repeating every 2 minutes.
- Hourly correction: 24-26 seconds starting at 0 minute and 0 second. 12 hour correction: 25 pulses of 24-26 seconds starting at 6:00:00 (am and pm) and repeating every 60 seconds.
- Hourly correction: 63-67 seconds starting at the 58th minute and 0 second. 12 hour correction: 14 pulses of 63-67 seconds starting at 5:06:00 (am and pm) and repeating every 2 minutes.
- \*Hourly correction: 54-56 seconds starting at the 58th minute and 5th second. 12 hour correction: 12 pulses of 63-67 seconds starting at 5:05:00 (am and pm) repeating every 90 seconds.

#### \*Note:

When switching between these correction protocols, you must use a different correction protocol to complete the transition. The AllSync Plus clock needs to distinguish between hourly corrections before it can change correction protocols internally.

#### COMPLIANCE

- FCC Part 15 Class B
- ICES-003

**SPECIFICATIONS**

- 120vac 50/60 Hz or 24vac 50/60 Hz
- Current draw: 24vac, 1 watt, .043 amps  
120vac, 3 watts, .028 amps

Maximum operating voltage: 24vac setting = 32vac  
120vac setting = 140vac  
Minimum operating voltage: 24vac setting = 18vac  
120vac setting = 105vac

**GENERAL**

Types of secondary clocks compatible with AllSync Plus:

Cincinnati	WS*, *D-8, *D-10, *D-12 Series
Dukane	24SS* Series, 240* Series
Edwards	*010 & *012 Series
Faraday	2315*, 2316*, 2335*, 2336*, 2380*, 2382*, 2310*, 2320*, 2330*, 2313*, 2314*, 2333*, 1310 through 1431 Series and 2420* through 2431* Series
Honeywell	ST402A* Series
Latham	Type SS* Series
National Time	*EX-HH and *EX-LL Series
Simplex® & IBM	77* Series, 82* Series, 2310 – 92* Series, 6310 – 92* Series

\*Indicates more numbers before or after.

**ORDERING INFORMATION**

Part #	Description
U45BHAA?04	10" Rd Flush, Black Sand 120vac
U45BHBA?04	10" Rd Flush, Black Sand 24vac
U55BHAA?04	12" Rd Flush, Black Sand 120vac
U55GHAA?04	12" Rd Flush, Steel Gray 120vac
U55BHBA?04	12" Rd Flush, Black Sand 24vac
U55GHBA?04	12" Rd Flush, Steel Gray 24vac
U58BHAA?04	12" Sq Flush, Black Sand 120vac
U58BHBA?04	12" Sq Flush, Black Sand 24vac
U65BHAA?04	15" Rd Flush, Black Sand 120vac
U65BHBA?04	15" Rd Flush, Black Sand 24vac

**BEZEL FINISHES**



**Black Sand=BH**  
Matte finish



**Steel Gray=GH**  
Smooth satin  
finish 12" round  
only

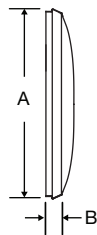
**Note:**

Replace the ? in the part number with the number from the list below that will correspond with the system you're replacing.  
New flush mount installations require backboxes.

- |             |              |                   |                        |
|-------------|--------------|-------------------|------------------------|
| 0 = Faraday | 1 = National | 5 = Simplex®      | 6 = Cincinnati/Edwards |
| 7 = 2-hook  | 8 = Setco    | 9 = R&H (keyhole) |                        |

For a plexiglass crystal, replace the BH or GH in the part number with BG or GG.

Steel  
flush mount



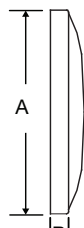
**OUTSIDE DIMENSIONS**

**Round**

**"A" Dimensions:**  
11¼" for 10" clocks  
13¼" for 12" clocks  
16" for 15" clocks

**"B" Dimensions:**  
1⅝" for 10", 12" & 15" clocks

Flush mount  
steel square



**OUTSIDE DIMENSIONS**

**Square (12" only)**

**"A" Dimensions:**  
12⅝" for 12" clocks

**"B" Dimensions:**  
1¼" for 12" clocks

At American Time, we continually strive to improve our products to meet our customers' needs and to provide the best possible value. The above specifications are believed to be correct, are subject to change without notice and may otherwise vary from the above. Please call if you need verification of any specifications or the suitability of a particular product for a particular application. © American Time