

**Secondary Clocks  
Synchronous-Wired Corrective  
58<sup>th</sup> Minute Metal Case**  
Manufactured in Dassel, MN



**FEATURES**

- **2 Year Warranty**
- Dual automatic clock correction cycles
  - > Hourly correction
  - > 12-hour scatter correction
- Quality heavy-duty brass gear train
- Precision 'Hysteresis' type *Synchron* motor
- Attractive modern design
- Heavy-duty construction
- All metal case
- Double dial mounting

**GENERAL**

The **american time**<sup>™</sup> Synchronous-Wiredcorrective clocks are used with the AllSync<sup>®</sup> master clocks to provide continuous accurate time indication. The secondary clocks are provided in round or square metal cases with glass crystals and bold, black numerals and minute markers on a non-yellowing white dial. Stylish hour and minute hands are aluminum with a black finish and a red sweep second hand.

**DESCRIPTION**

**american time**<sup>™</sup> clocks may be surface, flush or double dial mounted and are available in 10", 12", 15" or 18" round and 12" square. Once each hour the master clock supervises the accuracy of the secondary clock system by issuing a 60 second signal that will correct secondary clocks up to 59 minutes and 55 seconds slow. Every twelve hours the master issues a series of supervisory signals to correct units up to 11 hours, 59 minutes slow. The reference time for the hourly correction is the 58th minute. Twelve-hour correction occurs between 5:00 and 6:00 twice daily. Flush mount clocks require a flush backbox. Each clock is supplied with a pair of Molex<sup>®</sup> connectors.

**ORDERING INFORMATION**

<b>Part #</b>	<b>Description</b>		<b>Part #</b>	<b>Description</b>	
H44BHAH404	10" Rd Surface	120vac	H44BHBH404	10" Rd Surface	24vac
H45BHAH604	10" Rd Flush	120vac	H45BHBH604	10" Rd Flush	24vac
H54BHAH404	12" Rd Surface	120vac	H54BHBH404	12" Rd Surface	24vac
H55BHAH604	12" Rd Flush	120vac	H55BHBH604	12" Rd Flush	24vac
H57BHAH404	12" Sq Surface	120vac	H57BHBH404	12" Sq Surface	24vac
H58BHAH604	12" Sq Flush	120vac	H58BHBH604	12" Sq Flush	24vac
H64BHAH404	15" Rd Surface	120vac	H64BHBH404	15" Rd Surface	24vac
H65BHAH604	15" Rd Flush	120vac	H65BHBH604	15" Rd Flush	24vac
H74BHAH404	18" Rd Surface	120vac	H74BHBH404	18" Rd Surface	24vac
H75BHAH604	18" Rd Flush	120vac	H75BHBH604	18" Rd Flush	24vac
H53BHAH204	12" Rd Double dial wall	120vac	H53BHBH204	12" Rd Double dial wall	24vac
H52BHAH204	12" Rd Double dial ceiling	120vac	H52BHBH204	12" Rd Double dial ceiling	24vac
H51BHAH204	12" Sq Double dial wall	120vac	H51BHBH204	12" Sq Double dial wall	24vac
H50BHAH204	12" Sq Double dial ceiling	120vac	H50BHBH204	12" Sq Double dial ceiling	24vac
H63BHAH204	15" Rd Double dial wall	120vac	H63BHBH204	15" Rd Double dial wall	24vac
H62BHAH204	15" Rd Double dial ceiling	120vac	H62BHBH204	15" Rd Double dial ceiling	24vac

CFB103 10" Flush backbox

CFB106 12" Flush backbox

Double dial mounting requires a 4" square electrical box in the wall or ceiling.

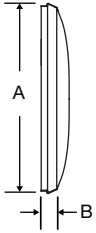
**Note:** Personalized dial option available. Add L to the end of the Part #.

**SPECIFICATIONS**

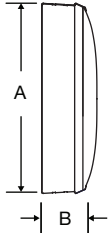
**Operating voltage**

120vac	60 Hz	motor = .057 amps	Coil = .020 amps
24vac	60 Hz	motor = .230 amps	Coil = .221 amps

Steel flush mount



Steel surface mount



**OUTSIDE DIMENSIONS**

**“A” Dimensions:**  
 11¼" for 10" clocks  
 13¼" for 12" clocks  
 16¼" for 15" surface clocks  
 16" for 15" flush clocks  
 19" for 18" clocks

**“B” Dimensions: Surface**  
 2¼" for 10", 12", 15"  
 3¼" for 18" clocks

**“B” Dimensions: Flush**  
 1⅝" for 10", 12", 15"  
 1⅞" for 18" clocks

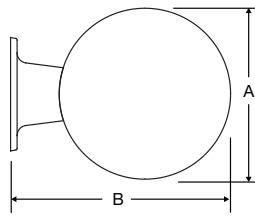
**Double Dial:**  
**Note:** includes 2 surface clocks

**“A” Dimensions:**  
 13¼" for 12" clocks  
 16¼" for 15" clocks

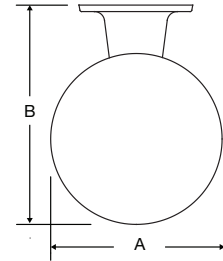
**“B” Dimensions:**  
 16⅞" for 12" clocks  
 19⅞" for 15" clocks

**“C” Dimensions:**  
 8" for 12" & 15" clocks

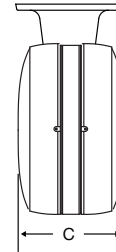
Wall mount round steel double dial



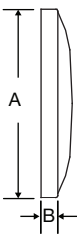
Ceiling mount round steel double dial



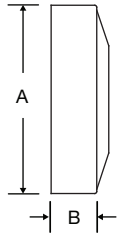
Steel double dial profile



Flush mount steel square



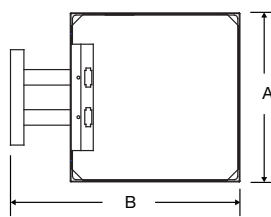
Surface mount steel square



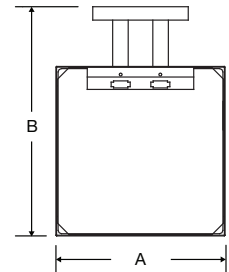
**Square 12" only**  
**OUTSIDE DIMENSIONS**

**Flush**  
**“A” Dimensions:**  
 12⅝"  
**“B” Dimensions: Surface**  
 3¼"  
**“B” Dimensions: Flush**  
 1⅝"  
**“B” Dimensions: Double Dial**  
 17⅞"  
**“C” Dimensions: Flush**  
 6⅝"

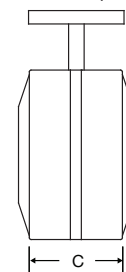
Wall mount steel square double dial mechanical



Ceiling mount steel square double dial mechanical



Steel square double dial profile



At American Time, we continually strive to improve our products to meet our customers' needs and to provide the best possible value. The above specifications are believed to be correct, are subject to change without notice and may otherwise vary from the above. Please call if you need verification of any specifications or the suitability of a particular product for a particular application.

© American Time