

Replacements for Edwards Dual-Motor Synchronous-Wired Metal Case

Manufactured in Dassel, MN



FEATURES

- 2 year warranty
- Fast advance clock correction
- Quality heavy-duty brass gear train
- Precision 'Hysteresis' type Synchron motor
- Attractive modern design
- Heavy-duty construction
- Metal case
- Double dial mounting

GENERAL

The **american time**™ Dual-Motor Synchronou-Wired corrective clocks are used with the AllSync IQ® master clocks to provide continuous accurate time indication. The secondary clocks are provided in round or square metal cases with glass crystals (plexiglass for weather-resistant) and bold, black numerals and minute markers on a non-yellowing white dial (weather-resistant have UV screen-printed plexiglass dial). Stylish hour and minute hands are aluminum with a black finish and a red sweep second hand.

DESCRIPTION

american time™ clocks may be surface, flush or double dial mounted and are available in 10", 12", 15", 18" & 24" round and 12" square. The clocks are advanced via a switch wired into the circuit. This switch has three positions which are drive, advance and off. Typical operation is in the drive position. The advance position will run the clocks at 10 times normal speed for catch-up after a power failure. The off position removes power to all clocks. Flush mount clocks require a flush backbox. Each clock is supplied with a pair of Molex® connectors.

ORDERING INFORMATION

Part #	Description	
P44BHGR422	10" Rd Surface	120/120vac
P45BHGR722	10" Rd Flush	120/120vac
P54BHGR422	12" Rd Surface	120/120vac
P55BHGR722	12" Rd Flush	120/120vac
P57BHGR422	12" Sq Surface	120/120vac
P58BHGR722	12" Sq Flush	120/120vac
P64BHGR422	15" Rd Surface	120/120vac
P65BHGR722	15" Rd Flush	120/120vac
P74BHGR422	18" Rd Surface	120/120vac
P75BHGR722	18" Rd Flush	120/120vac
P84BHGR422	24" Rd Surface	120/120vac
P53BHGR222	12" Rd Double dial wall	120/120vac
P52BHGR222	12" Rd Double dial ceiling	120/120vac
P51BHGR222	12" Sq Double dial wall	120/120vac
P50BHGR222	12" Sq Double dial ceiling	120/120vac
P63BHGR222	15" Sq Double dial wall	120/120vac
P62BHGR222	15" Sq Double dial ceiling	120/120vac

CFB109 12", 15" Flush backbox

Weather-resistant available – change BH in Part # to BW. i.e. P54BWGR422

Also available in 24/24vac – consult factory for part numbers.

Double dial mounting requires a 4" square electrical box in the wall or ceiling.

Note: Personalized dial option available. Add L to the end of the Part #.

SPECIFICATIONS

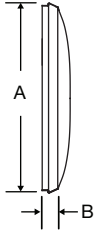
Run Motor

120vac 60 Hz 1 rpm .058 amps
 24vac 60 Hz 1 rpm .302 amps

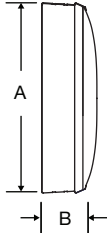
Reset Motor

120vac 60 Hz 10 rpm .070 amps
 24vac 60 Hz 10 rpm .231 amps

Steel flush mount



Steel surface mount



OUTSIDE DIMENSIONS

"A" Dimensions:
 11¼" for 10" clocks
 13¼" for 12" clocks
 16¼" for 15" surface clocks
 16" for 15" flush clocks
 19" for 18" clocks
 24½" for 24" clocks

"B" Dimensions: Surface
 2¼" for 10", 12", 15"
 3¼" for 18" clocks
 4¼" for 24" clocks

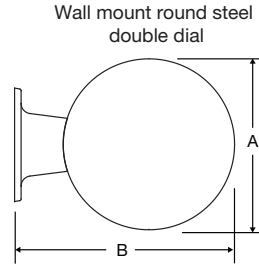
"B" Dimensions: Flush
 1⅝" for 10", 12", 15"
 1⅞" for 18" clocks

Double Dial:
Note: includes 2 surface clocks

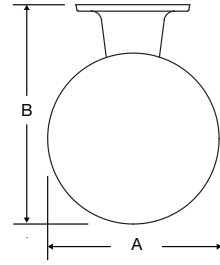
"A" Dimensions:
 13¼" for 12" clocks
 16¼" for 15" clocks

"B" Dimensions:
 16⅞" for 12" clocks
 19⅞" for 15" clocks

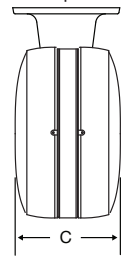
"C" Dimensions:
 8" for 12" & 15" clocks



Ceiling mount round steel double dial



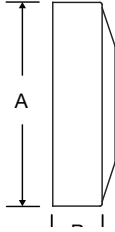
Steel double dial profile



Flush mount steel square



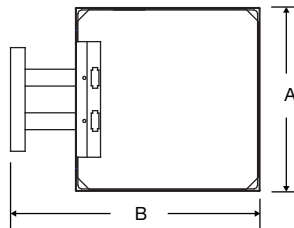
Surface mount steel square



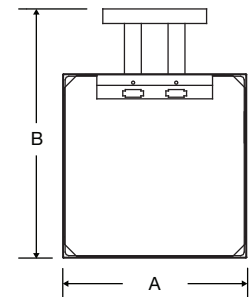
Square 12" only OUTSIDE DIMENSIONS

Flush
"A" Dimensions:
 12⅝"
"B" Dimensions: Surface
 3¼"
"B" Dimensions: Flush
 1⅝"
"B" Dimensions: Double Dial
 17⅞"
"C" Dimensions: Flush
 6⅝"

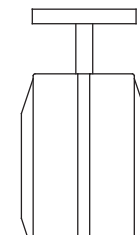
Wall mount steel square double dial mechanical



Ceiling mount steel square double dial mechanical



Steel square double dial profile



At American Time, we continually strive to improve our products to meet our customers' needs and to provide the best possible value. The above specifications are believed to be correct, are subject to change without notice and may otherwise vary from the above. Please call if you need verification of any specifications or the suitability of a particular product for a particular application.

© American Time