



#### FEATURES

- 5 Year Warranty
- UL/cUL Listed - 12" & 15" round, surface only
- Microprocessor controlled movement
- 15 minutes of backup power (no batteries required)
- Accuracy to within  $\pm 1$  second of a master clock
- Reduced power consumption
- Attractive modern design
- Heavy-duty construction
- Metal case
- Diagnostic LED
- Optional plexiglass crystal available

#### DESCRIPTION

The **american time™** AllSync Plus clocks are provided in round or square metal cases with glass crystals and bold, black numerals and minute markers on a non-yellowing white dial. Stylish hour and minute hands are aluminum with a black finish and a red sweep second hand.

The **american time™** AllSync Plus clock is designed to work with multiple master clocks and correction signals. This unit is programmed to identify the signal it receives from the master and operate as that style of clock. Changing clock operation from one style to another is as easy as unplugging the clock from one system and plugging it into another. If needed, changing the placement of two small jumpers on the circuit board can change the voltage required to run this clock from 120vac to 24vac or 24vac to 120vac. This clock provides 15 minutes of backup run power without the use of batteries. If a power outage should last longer than 15 minutes, the clock will synchronize to the master clock at the hourly and 12 hour correction cycles.

#### Correction Signals

Works on:

- Hourly correction: 7-9 seconds starting at the 57th minute and 54th second. 12 hour correction: 13-18 seconds starting at 5:57:54 (am and pm).
- Hourly correction: 24-28.5 seconds starting at the 0 minute and 0 second. 12 hour correction: 24-32 minutes starting at 6:00:00 (am and pm).
- \*Hourly correction: 54-56 seconds starting at the 58th minute and 5th second. 12 hour correction: 10 pulses of 94-96 seconds starting at 5:05:00 (am and pm) and repeating every 2 minutes.
- Hourly correction: 24-26 seconds starting at 0 minute and 0 second. 12 hour correction: 25 pulses of 24-26 seconds starting at 6:00:00 (am and pm) and repeating every 60 seconds.
- Hourly correction: 63-67 seconds starting at the 58th minute and 0 second. 12 hour correction: 14 pulses of 63-67 seconds starting at 5:06:00 (am and pm) and repeating every 2 minutes.
- \*Hourly correction: 54-56 seconds starting at the 58th minute and 5th second. 12 hour correction: 12 pulses of 63-67 seconds starting at 5:05:00 (am and pm) repeating every 90 seconds.

#### \*Note:

When switching between these correction protocols, you must use a different correction protocol to complete the transition. The AllSync Plus clock needs to distinguish between hourly corrections before it can change correction protocols internally.

#### COMPLIANCE

- FCC Part 15 Class B
- ICES-003

## SPECIFICATIONS

- 120vac 50/60 Hz or 24vac 50/60 Hz
- Current draw: Single dial:  
 24vac, 1 watt, .043 amps  
 120vac, 3 watts, .028 amps  
 Double dial:  
 24vac, 2 watts, .086 amps  
 120vac, 6 watts, .056 amps

Maximum operating voltage: 24vac setting = 32vac  
 120vac setting = 140vac  
 Minimum operating voltage: 24vac setting = 18vac  
 120vac setting = 105vac

## GENERAL

Types of secondary clocks compatible with AllSync Plus:

Cincinnati	WS*, *D-8, *D-10, *D-12 Series
Dukane	24SS* Series, 240* Series
Edwards	*010 & *012 Series
Faraday	2315*, 2316*, 2335*, 2336*, 2370*, 2372*, 2380*, 2382*, 2311*, 2320*, 2331*, 2314*, 1310 through 1431 Series and 2420* through 2431* Series
Honeywell	ST402A* Series
Lathem	Type SS* Series
National Time	*EX-HH and *EX-LL Series
Simplex® & IBM	77* Series, 82* Series, 2310 – 92* Series, 6310 – 92* Series

\*Indicates more numbers before or after.

## ORDERING INFORMATION

Part #	Description	Part #	Description
U44BHAA404	10" Rd Surface 120vac	U53BHAA204	12" Rd Double dial wall 120vac
U44BHBA404	10" Rd Surface 24vac	U53BHBA204	12" Rd Double dial wall 24vac
U54BHAA404	12" Rd Surface 120vac	U52BHAA204	12" Rd Double dial ceiling 120vac
U54BHBA404	12" Rd Surface 24vac	U52BHBA204	12" Rd Double dial ceiling 24vac
U57BHAA404	12" Sq Surface 120vac	U51BHAA204	12" Sq Double dial wall 120vac
U57BHBA404	12" Sq Surface 24vac	U51BHBA204	12" Sq Double dial wall 24vac
U64BHAA404	15" Rd Surface 120vac	U50BHAA204	12" Sq Double dial ceiling 120vac
U64BHBA404	15" Rd Surface 24vac	U50BHBA204	12" Sq Double dial ceiling 24vac
		U63BHAA204	15" Rd Double dial wall 120vac
		U63BHBA204	15" Rd Double dial wall 24vac
		U62BHAA204	15" Rd Double dial ceiling 120vac
		U62BHBA204	15" Rd Double dial ceiling 24vac

**Notes:** Replace the BH (Black Sand) in the part # with GH for a Steel Gray case. 10" & all square available in Black Sand only.  
 For a plexiglass crystal, replace the BH or GH in the part number with BG or GG.

## BEZEL FINISHES

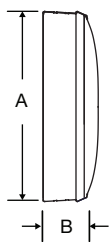


**Black Sand=BEH**  
Matte finish



**Steel Gray=GH**  
12" round only  
Smooth satin finish

Steel surface mount



## OUTSIDE DIMENSIONS

### Round

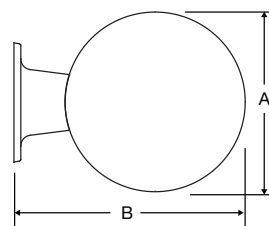
#### "A" Dimensions:

- 11¼" for 10" clocks
- 13¼" for 12" clocks
- 16¼" for 15" clocks

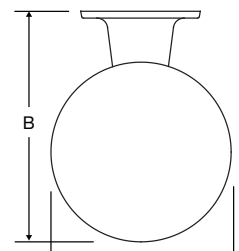
#### "B" Dimensions:

- 2¼" for 10", 12" & 15" clocks

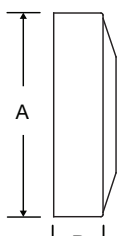
Wall mount round steel double dial



Ceiling mount round steel double dial



Surface mount steel square



### Square (12" only)

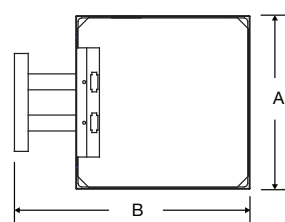
#### "A" Dimensions:

- 12⅝"

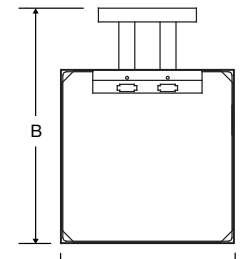
#### "B" Dimensions:

- 3¼"

Wall mount steel square double dial mechanical



Ceiling mount steel square double dial mechanical



Double dial mounting requires a 4" square electrical box in the wall or ceiling.

At American Time, we continually strive to improve our products to meet our customers' needs and to provide the best possible value. The above specifications are believed to be correct, are subject to change without notice and may otherwise vary from the above. Please call if you need verification of any specifications or the suitability of a particular product for a particular application.  
 © American Time