



FEATURES

- 5 Year Warranty
- Automatically adjusts for Daylight Saving Time changes
- No signals or antennas required
- 120vac
- Heavy-duty all metal bezel
- Durable powder coat finish

GENERAL

The **american time™** AllSet electric clocks, with automatic DST feature, are ideal for schools, hospitals, and state and federal buildings. Clock bezel is constructed of durable, 21 gauge cold rolled steel, manufactured to specific high quality standards, with a durable powder coat finish. Glass crystal is highly resistant to scratches. Shatter-resistant plexiglass crystals are also available. Customization of dials is available. The hour and minute hands are black aluminum. Sweep second hand is red aluminum.

DESCRIPTION

The AllSet quartz clock movement features a microchip with an internal lithium battery that keeps track of the current date and time. The microchip is programmed to make the daylight saving time changes at 03:00 a.m. Eastern, 02:00 a.m. Central, 01:00 a.m. Mountain and 12:00 a.m. Pacific time twice a year. In the fall, the movement will stop moving the hands for one hour and start ticking again when the clock is on time to adjust from daylight saving time to standard time. In the spring, the movement will advance the hands forward one hour, at an accelerated speed, to achieve the correct daylight saving time.

Clocks use a quartz-based electric movement which operates from 120vac for years of maintenance-free operation.

Note: Time must be manually set at startup and after power outages. Internal time/date is only used for moving hands for DST changes.

ORDERING INFORMATION

Part #	Description
R54BHAV904	12" Round surface, Black Sand
R54GHAV904	12" Round surface, Steel Gray
R64BHAV904	15" Round surface, Black Sand
R52BHAV204	12" Round double dial ceiling, Black Sand
R52GHAV204	12" Round double dial ceiling, Steel Gray
R53BHAV204	12" Round double dial wall, Black Sand
R53GHAV204	12" Round double dial wall, Steel Gray
R62BHAV204	15" Round double dial ceiling, Black Sand
R63BHAV204	15" Round double dial wall, Black Sand

BEZEL FINISHES



Black Sand=BH



**Steel Gray=GH
(12" only)**

Double dial mounting requires a 4" square electrical box in the wall or ceiling.

Note: Personalized dial option available. Add L to the end of the Part #.

Note: 15" available in Black Sand only

SPECIFICATIONS

Operating voltage:	120vac
Operating voltage range:	90-150vac 50/60 Hz
Power consumption:	.5 watts
Operating temp range:	14°F to 122°F (-10°C to +50°C)
Accuracy:	Typical ± 1 Sec/Day
Nominal torque at sweep shaft:	1.5 g/cm
Quartz frequency:	32.768 kHz

OUTSIDE DIMENSIONS

"A" Dimensions:

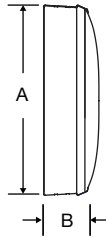
Round

13¹/₄" for 12" clocks
16¹/₄" for 15" clocks

"B" Dimensions: Surface

2¹/₄" for 12" clocks
2¹/₄" for 15" clocks

Steel
surface mount



Double Dial:

Note: includes 2 surface clocks

"A" Dimensions:

13¹/₄" for 12" clocks
16¹/₄" for 15" clocks

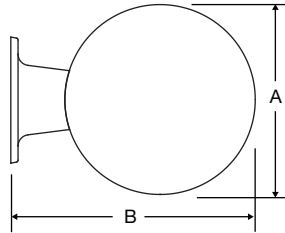
"B" Dimensions:

16⁷/₈" for 12" clocks
19⁷/₈" for 15" clocks

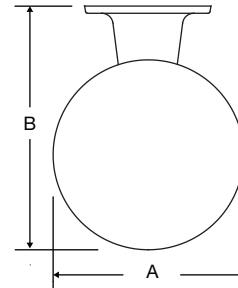
"C" Dimensions:

8" for 12" clocks

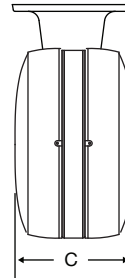
Wall mount round steel
double dial



Ceiling mount round steel
double dial



Steel double
dial profile



At American Time, we continually strive to improve our products to meet our customers' needs and to provide the best possible value. The above specifications are believed to be correct, are subject to change without notice and may otherwise vary from the above. Please call if you need verification of any specifications or the suitability of a particular product for a particular application. © American Time