



FEATURES

- **2 Year Warranty**
- Dual automatic clock correction cycles
 - > Hourly correction
 - > 12-hour scatter correction
- Quality heavy-duty brass gear train
- Precision ‘Hysteresis’ type *Synchron* motor
- Attractive modern design
- Heavy-duty construction
- All metal case
- Double dial mounting

GENERAL

american time™ Dual Motor Synchronous–Wired clocks are used with the YMP series or AllSync® master clocks to provide continuous accurate time indication. The secondary clocks are provided in round or square, metal cases with glass crystals and bold black numerals and minute markers printed on a non-yellowing white dial. Stylish minute and hour hands aluminum with a black finish and a red sweep second hand.

DESCRIPTION

american time™ Dual Motor Synchronous clocks use two motors for proper operation. The main drive motor runs the clock and is a 1 RPM motor while the second motor controls the correction and synchronization. This correction motor is 60 RPM. Once each hour the master clock supervises the accuracy of the secondary clocks by issuing an electronic correction signal for the proper duration, which will sync the clocks up to the same minute. Once each hour a 29-second signal is applied to the correction motor line from XX:59:30 to XX:59:59 which will synchronize the minute hands. A 15-minute correction signal on the correction motor will cause a 12-hour correction to occur from 5:12:00 to 5:28:00. This will happen twice daily and will sync all the clocks up to the proper hour. During hourly corrections, power is removed from the run motor. The clocks may be surface, flush or double dial mounted and are available in 10", 12", or 16" round and 12" square. Flush clocks require a flush backbox. Each clock is supplied with a pair of Molex® connectors.

ORDERING INFORMATION

Part Numbers	Description		Part Numbers	Description	
X44BHGA404	10" Round Surface	120vac	X44BHHA404	10" Round Surface	24vac
X45BHGA804	10" Round Flush	120vac	X45BHHA804	10" Round Flush	24vac
X54BHGA404	12" Round Surface	120vac	X54BHHA404	12" Round Surface	24vac
X55BHGA804	12" Round Flush	120vac	X55BHHA804	12" Round Flush	24vac
X57BHGA404	12" Square Surface	120vac	X57BHHA404	12" Square Surface	24vac
X58BHGA804	12" Square Flush	120vac	X58BHHA804	12" Square Flush	24vac
X64BHGA404	15" Round Surface	120vac	X64BHHA404	15" Round Surface	24vac
X65BHGA804	15" Round Flush	120vac	X65BHHA804	15" Round Flush	24vac
X53BHGA204	12" Round Double Dial wall	120vac	X53BHHA204	12" Round Double Dial wall	24vac
X52BHGA204	12" Round Double Dial ceiling	120vac	X52BHHA204	12" Round Double Dial ceiling	24vac
X51BHGA204	12" Square Double Dial wall	120vac	X51BHHA204	12" Square Double Dial wall	24vac
X50BHGA204	12" Square Double Dial ceiling	120vac	X50BHHA204	12" Square Double Dial ceiling	24vac
X63BHGA204	15" Round Double Dial wall	120vac	X63BHHA204	15" Round Double Dial wall	24vac
X62BHGA204	15" Round Double Dial ceiling	120vac	X62BHHA204	15" Round Double Dial ceiling	24vac

CFB113 10", 12", 15" Backbox

Double dial mounting to wall requires 4" square electrical box in wall.

Note: Personalized dial option available. Add L to the end of the Part #.

SPECIFICATIONS

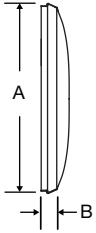
Run Motor

24vac 60 Hz 1 rpm .144 amps
 120vac 60 Hz 1 rpm .033 amps

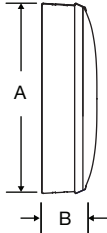
Reset Motor

24vac 60 Hz 60 rpm .286 amps
 120vac 60 Hz 60 rpm .070 amps

Steel flush mount



Steel surface mount



OUTSIDE DIMENSIONS

"A" Dimensions:
 11¹/₄" for 10" clocks
 13¹/₄" for 12" clocks
 16¹/₄" for 15" surface clocks
 16" for 15" flush clocks

"B" Dimensions: Surface
 2¹/₄" for 10", 12", 15" clocks

"B" Dimensions: Flush
 1⁵/₈" for 10", 12", 15" clocks

Double Dial:

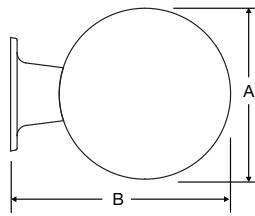
Note: includes 2 surface clocks

"A" Dimensions:
 13¹/₄" for 12" clocks
 16¹/₄" for 15" clocks

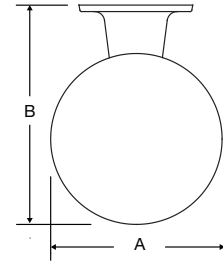
"B" Dimensions:
 16⁷/₈" for 12" clocks
 19⁷/₈" for 15" clocks

"C" Dimensions:
 8" for 12" & 15" clocks

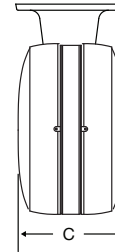
Wall mount round steel double dial



Ceiling mount round steel double dial



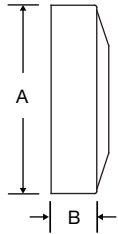
Steel double dial profile



Flush mount steel square



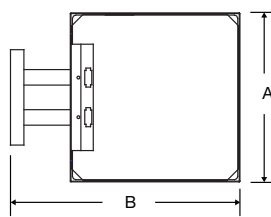
Surface mount steel square



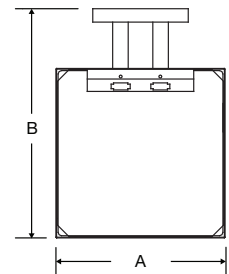
Square 12" only
OUTSIDE DIMENSIONS

Flush
"A" Dimensions:
 12⁵/₈"
"B" Dimensions: Surface
 3¹/₄"
"B" Dimensions: Flush
 1⁵/₈"
"B" Dimensions: Double Dial
 17¹/₈"
"C" Dimensions: Flush
 6⁵/₈"

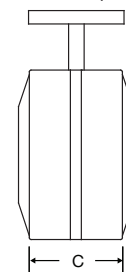
Wall mount steel square double dial mechanical



Ceiling mount steel square double dial mechanical



Steel square double dial profile



At American Time, we continually strive to improve our products to meet our customers' needs and to provide the best possible value. The above specifications are believed to be correct, are subject to change without notice and may otherwise vary from the above. Please call if you need verification of any specifications or the suitability of a particular product for a particular application. © American Time