



**GENERAL INFORMATION**

- Case: ..... Heavy-duty steel
- Clock hour & minute hands: ..... Black
- Clock second hand: ..... Red
- Power: ..... 10" - 4 (1.5V) AA Lithium batteries (included)  
12" & 15" - 6 (1.5V) AA Lithium batteries (included)
- Battery life: ..... 10" - up to 5 years; 12" & 15" - 5+ years
- Rear panel indicator: ..... Red LED indicates receiver wake-up and time sync
- Receiver sensitivity: ..... 10uV per meter
- Antenna type: ..... External
- Time to synchronize: ..... Average time to sync is 3 to 5 minutes (syncs automatically 4 times per day)
- Time accuracy: ..... ±1 second to SiteSync IQ® System Controller
- Warranty: ..... Two Years

**PHYSICAL / ENVIRONMENTAL SPECIFICATIONS**

- Weight: ..... 12" - 4.0 lbs.; 15" - 4.7 lbs.; 12" Double Dial - 11.25 lbs.
- Operating temperature: ..... 41°F to 131°F
- Storage temperature: ..... 41°F to 131°F
- Relative humidity: ..... 0% - 95% Non-condensing

**ORDERING INFORMATION**

Part #	Description
SQ44BHDD904BP	10" Round, surface mount
SQ45BHDD?04BP	10" Round, flush mount
SQ54??DD904BP	12" Round, surface mount
SQ55??DD?04BP	12" Round, flush mount
SQ57??DD904BP	12" Square, surface mount
SQ58??DD?04BP	12" Square, flush mount
SQ53??DD204BP	12" Round, double dial wall
SQ52??DD204BP	12" Round, double dial ceiling
SQ51??DD204BP	12" Square, double dial wall
SQ50??DD204BP	12" Square, double dial ceiling
SQ64BHDD904BP	15" Round, surface mount
SQ65BHDD?04BP	15" Round, flush mount
SQ63??DD204BP	15" Round, double dial wall
SQ62??DD204BP	15" Round, double dial ceiling

**BEZEL FINISHES**



**Black Sand=BH**



**Steel Gray=GH  
12" only**

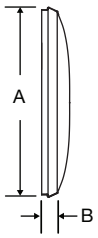
**Note:** Replace the ?? in the part # with the 2 letter code for the bezel finish. See colors above.  
BH=Black Sand GH=Steel Gray (12" only)

**Note:** If flush mounting in an existing backbox, change the ? in the Part # to specify correct hanger type from the list below:  
1=National Time 5=Simplex®, Dukane, Lathem 6=Cincinnati, Edwards, Faraday, Honeywell 8=Standard™ Electric

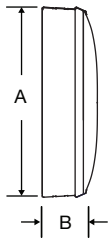
**Note:** Add L to the end of the Part # for personalized dial option  
Add RT to the end of Part # for the 25' remote receiver option  
Add RF to the end of Part # for the 50' remote receiver option

Other dial styles available.

Steel flush mount



Steel surface mount



**OUTSIDE DIMENSIONS**  
**"A" Dimensions: All styles**  
**Round**

11 1/4" for 10" clocks  
13 1/4" for 12" clocks  
16 1/4" for 15" clocks

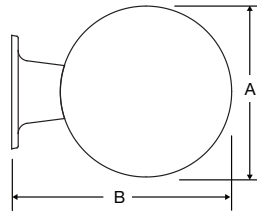
**"B" Dimensions: Surface**  
2 1/4" for all clocks

**"B" Dimensions: Flush**  
1 5/8" for all clocks

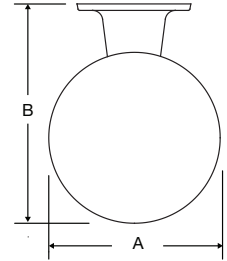
**Double Dials**  
**"B" Dimensions: Flush**  
16 7/8" for 12" clocks  
19 7/8" for 15" clocks

**"C" Dimensions: Flush**  
8" for 12" & 15" clocks

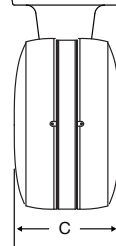
Wall mount round steel double dial



Ceiling mount round steel double dial



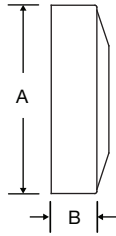
Steel double dial profile



Flush mount steel square



Surface mount steel square



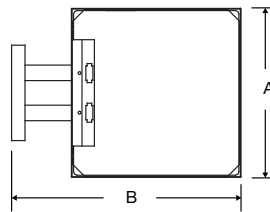
**OUTSIDE DIMENSIONS**  
**"A" Dimensions:**  
**Square (12" only)**  
12 5/8"

**"B" Dimensions: Surface**  
3 1/8"

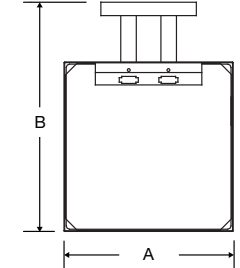
**"B" Dimensions: Flush**  
1 5/8"

**"C" Dimensions: Flush**  
6 5/8"

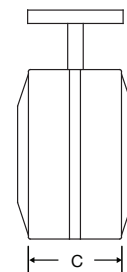
Wall mount steel square double dial mechanical



Ceiling mount steel square double dial mechanical



Steel square double dial profile



At American Time, we continually strive to improve our products to meet our customers' needs and to provide the best possible value. The above specifications are believed to be correct, are subject to change without notice and may otherwise vary from the above. Please call if you need verification of any specifications or the suitability of a particular product for a particular application. © American Time