



FEATURES

- **5 Year Warranty**
- Automatically adjusts for Daylight Saving Time changes
- No signals or antennas required
- AA battery movement
- Heavy-duty all metal bezel
- Durable powder coat finish
- Optional Battery Booster

GENERAL

The **american time™** AllSet battery clocks, with optional Battery Booster, are ideal for schools, hospitals, and state and federal buildings.

DESCRIPTION

The AllSet quartz clock movement features a microchip with an internal battery that keeps track of the current date and time. The microchip is programmed to make the daylight saving time change at 03:00 am Eastern, 02:00 am Central, 01:00 am Mountain and 12:00 Pacific time twice a year. In the Spring, the movement will move the hands forward one hour, at an accelerated speed, to achieve the advance of one hour. In the Fall, the movement will automatically stop moving the hands for one hour and start ticking again when the clock is on time, to adjust back to standard time.

Clocks have a quartz-based battery movement which uses one AA alkaline battery. The optional Battery Booster holds six AA batteries in parallel which extends maintenance free clock operating life for 5+ years.

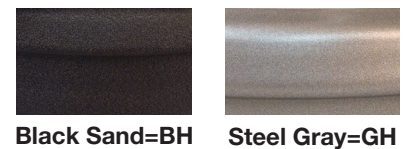
Clock bezel is constructed of durable, 21 gauge cold rolled steel, manufactured to specific high quality standards, with a durable powder coat finish in two colors. Glass crystal is highly resistant to scratches. Shatter-resistant plexiglass crystals are also available. Customization of dials is available. The hour and minute hands are black aluminum. Sweep second hand is red aluminum.

Note: Time must be manually set at startup and after replacing the batteries. Internal time/date is only used for moving hands for DST changes.

ORDERING INFORMATION

| Part # | Description | With Battery Booster Plus Part # |
|---------------|---|---|
| R54BHQD904 | 12" Round surface, Black Sand | R54BHQD904BP |
| R54GHQD904 | 12" Round surface, Steel Gray | R54GHQD904BP |
| R52BHQD204 | 12" Round double dial ceiling, Black Sand | R52BHQD204BP |
| R52GHQD204 | 12" Round double dial ceiling, Steel Gray | R52GHQD204BP |
| R53BHQD204 | 12" Round double dial wall, Black Sand | R53BHQD204BP |
| R53GHQD204 | 12" Round double dial wall, Steel Gray | R53GHQD204BP |
| R64BHQD904 | 15" Round surface, Black Sand | R64BHQD904BP |
| R64GHQD904 | 15" Round surface, Steel Gray | R64GHQD904BP |
| R63BHQD204 | 15" Round double dial wall, Black Sand | R63BHQD204BP |
| R63GHQD204 | 15" Round double dial wall, Steel Gray | R63GHQD204BP |
| R62BHQD204 | 15" Round double dial ceiling, Black Sand | R62BHQD204BP |
| R62GHQD204 | 15" Round double dial ceiling, Steel Gray | R62GHQD204BP |

BEZEL FINISHES



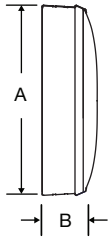
Double dial mounting requires a 4" square electrical box in the wall or ceiling.

Note: Personalized dial option available. Add L to the end of the Part #.

SPECIFICATIONS

Operating voltage: 1.5vdc
Operating voltage range: 1.3 to 1.7vdc
Operating temp range: 14°F to 122°F (-10°C to +50°C)
Accuracy typical: ±1 Sec/Day
Nominal torque at 1.5vdc: 1.5 g/cm @ second shaft

Steel
surface mount



OUTSIDE DIMENSIONS

"A" Dimensions:
13³/₄" for 12" clocks
16¹/₂" for 15" clocks

"B" Dimensions: Surface
2¹/₄" for 12" & 15" clocks

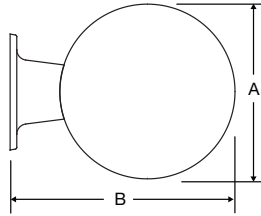
Double Dial:
Note: includes 2
surface clocks

"A" Dimensions:
13³/₄" for 12" clocks
16¹/₂" for 15" clocks

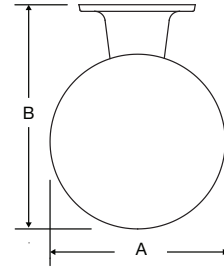
"B" Dimensions:
16⁷/₈" for 12" clocks
19⁷/₈" for 15" clocks

"C" Dimensions:
8" for 12" & 15" clocks

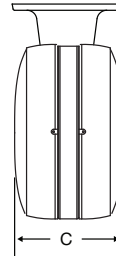
Wall mount round steel
double dial



Ceiling mount round steel
double dial



Steel double
dial profile



At American Time, we continually strive to improve our products to meet our customers' needs and to provide the best possible value. The above specifications are believed to be correct, are subject to change without notice and may otherwise vary from the above. Please call if you need verification of any specifications or the suitability of a particular product for a particular application.

© American Time