



GENERAL INFORMATION

- Clock hour & minute hands:..... Black
- Clock second hand: Red
- Power: 120vac (or 24vac), 50/60 Hz
Continues operating for up to 1 hour during power outage.
- Remote Receiver: Option for rooms shielded from radio frequencies, such as hospital X-ray rooms. This option uses common RJ11 jacks to terminate both ends of the included 50 foot cable separating the receiver unit from the clock.
- Input Voltage Range 120vac/240vac (10v to 240v)
24vac (15v to 30v)
- Current draw:..... 5mA (120vac)
3mA (240vac)
>80mA (24vac)
- Plug: 120vac - 10A 125v 2 prong polarized plug, 6 ft. cord
24vac - 4 position Molex® connector
- Rear panel indicator: Red LED indicates receiver is synchronizing to master time
Green LED indicates power applied
- Receiver sensitivity:..... 10uV per meter
- Antenna type: External
- Time to synchronize: Average time to sync is 3 to 5 minutes. Syncs automatically 4 times per day
- Time accuracy: ±1 second to SiteSync IQ® Master Clock
- Reset button: Press for 5 seconds to force time sync
- Warranty: Five Years

PHYSICAL / ENVIRONMENTAL SPECIFICATIONS

- Operating temperature:..... 41°F to 131°F
- Storage temperature: 41°F to 131°F
- Relative humidity: 0% - 95% Non-condensing

ORDERING INFORMATION

Part #	Description	Part #	Description
SQ44BHAD904	10" Round, surface mount, 110vac	SQ44BHBD904	10" Round, surface mount, 24vac
SQ45BHAD?04	10" Round, flush mount, 110vac	SQ45BHBD?04	10" Round, flush mount, 24vac
SQ54??AD904	12" Round, surface mount, 110vac	SQ54??BD904	12" Round, surface mount, 24vac
SQ55??AD?04	12" Round, flush mount, 110vac	SQ55??BD?04	12" Round, flush mount, 24vac
SQ57??AD904	12" Square, surface mount, 110vac	SQ57??BD904	12" Square, surface mount, 24vac
SQ58??AD?04	12" Square, flush mount, 110vac	SQ58??BD?04	12" Square, flush mount, 24vac
SQ53??AD204	12" Round, double dial, wall mount, 110vac	SQ53??BD204	12" Round, double dial, wall mount, 24vac
SQ52??AD204	12" Round, double dial, ceiling mount, 110vac	SQ52??BD204	12" Round, double dial, ceiling mount, 24vac
SQ64??AD904	15" Round, surface mount, 110vac	SQ64??BD904	15" Round, surface mount, 24vac
SQ65BHAD?04	15" Round, flush mount, 110vac	SQ65BHBD?04	15" Round, flush mount, 24vac
SQ63??AD204	15" Round, double dial, wall mount, 110vac	SQ63??BD204	15" Round, double dial, wall mount, 24vac
SQ62??AD204	15" Round, double dial, ceiling mount, 110vac	SQ62??BD204	15" Round, double dial, ceiling mount, 24vac

Other dial styles available.

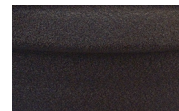
Note: Replace the ?? in the part # with the 2 letter code for the bezel finish. See colors below.
BH=Black Sand GH=Steel Gray All 10" & the 15" flush available in Black Sand only.

Note: For plexiglass lens, replace the ?? or the BH in the part # with the 2 letter code for the bezel finish. Additional cost.
BG=Black Sand with plexiglass lens GG=Steel Gray with plexiglass lens
All 10" & 15" flush Black Sand only.

Note: Add L to the end of the Part # for personalized dial option
Add RT to the end of Part # for the 25' remote receiver option
Add RF to the end of Part # for the 50' remote receiver option

Note: These clocks are intended for use with a SiteSync IQ Wireless Clock System.

BEZEL FINISHES

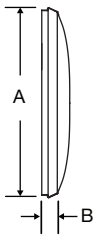


Black Sand=BH
Matte finish

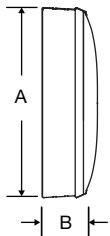


Steel Gray=GH
Smooth satin finish

Steel flush mount



Steel surface mount



OUTSIDE DIMENSIONS

"A" Dimensions:

Round

11¹/₄" for 10" clocks
13¹/₄" for 12" clocks
16¹/₄" for 15" clocks

"B" Dimensions: Surface

2¹/₄" for all clocks

"B" Dimensions: Flush

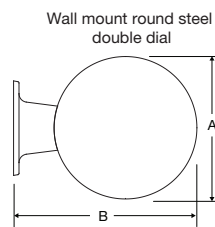
1⁵/₈" for all clocks

"B" Dimensions: Double dial

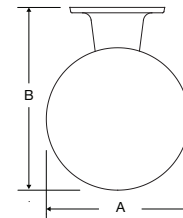
16⁷/₈" for 12" clocks
19⁷/₈" for 15" clocks

"C" Dimensions: Double dial

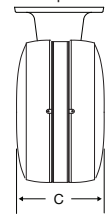
8" for 12" & 15" clocks



Ceiling mount round steel double dial



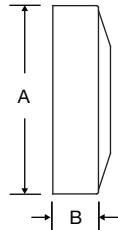
Steel double dial profile



Flush mount steel square



Surface mount steel square



OUTSIDE DIMENSIONS

"A" Dimensions:

Square (12" only)

12⁵/₈"

"B" Dimensions: Surface

3¹/₈"

"B" Dimensions: Flush

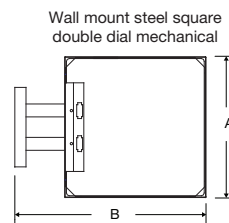
1⁵/₈"

"B" Dimensions: Double dial

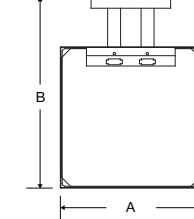
17¹/₈"

"C" Dimensions: Double dial

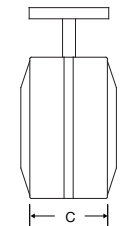
6⁵/₈"



Ceiling mount steel square double dial mechanical



Steel square double dial profile



At American Time, we continually strive to improve our products to meet our customers' needs and to provide the best possible value. The above specifications are believed to be correct, are subject to change without notice and may otherwise vary from the above. Please call if you need verification of any specifications or the suitability of a particular product for a particular application.

© American Time