



## Wireless Weather-Resistant Analog Steel Case Clocks Battery



### FEATURES

- 1 Year Warranty
- Sweep second hand
- AA lithium batteries (included)
- Heavy-duty steel case
- Shatter-resistant plexiglass crystal
- Durable powder coat finish

### GENERAL

These wireless weather-resistant battery clocks are designed to be durable, dependable and easy to read. They are available in two sizes and are intended for use with the SiteSync IQ® system controller.

### DESCRIPTION

Clock bezels are constructed of durable, 21 gauge cold rolled steel, manufactured to specific high quality standards, with a durable powder coat finish. Dials are laminated plastic to resist warping. Shatter-resistant plexiglass crystals resist scratching and discoloration. The hour and minute hands are black aluminum. Sweep second hand is red aluminum.

Movements are enclosed in a plastic cover to protect against dust and moisture. The Battery Booster uses six AA lithium batteries (*included*) and extends clock operation for 5+ years.

### ORDERING INFORMATION

Part #	Description
SQ54BWDD904BP	12" Round, surface mount
SQ64BWDD904BP	15" Round, surface mount

Other dial styles available.

## SPECIFICATIONS

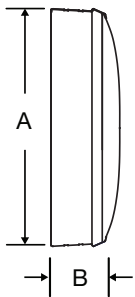
- Case: ..... Heavy-duty steel; black finish
- Clock hour & minute hands: ..... Black
- Clock second hand: ..... Red
- Power: ..... 6 (1.5V) AA Lithium batteries (included)  
Battery life approx. 5 years
- Rear panel indicator: ..... Red LED indicates receiver wake-up and time sync
- Receiver sensitivity: ..... 10uV per meter
- Antenna type: ..... External
- Time to synchronize: ..... Average time to sync is 3 to 5 minutes (syncs automatically 4 times per day)
- Time accuracy: .....  $\pm 1$  second to SiteSync IQ® System Controller
- Warranty: ..... One Year
- Weight: ..... 12" - 4 lbs.; 15" - 4.3 lbs.
- Operating temperature: ..... 41°F to 131°F \*
- Storage temperature: ..... 41°F to 131°F
- Relative humidity: ..... 0% - 95% Non-condensing

\*Due to operating temperature of the receiver it is not recommended for outdoor use in all areas of the country. See map.

Shaded area—not recommended

Unshaded area—approved for outdoor use

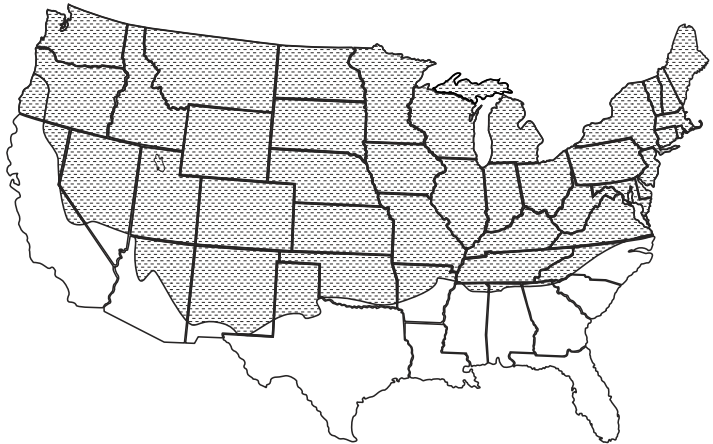
Steel  
surface mount



### OUTSIDE DIMENSIONS

**"A" Dimensions:**  
13<sup>1</sup>/<sub>4</sub>" for 12" clocks  
16<sup>1</sup>/<sub>4</sub>" for 15" clocks

**"B" Dimensions: Surface**  
2<sup>1</sup>/<sub>4</sub>" for all clocks



At American Time, we continually strive to improve our products to meet our customers' needs and to provide the best possible value. The above specifications are believed to be correct, are subject to change without notice and may otherwise vary from the above. Please call if you need verification of any specifications or the suitability of a particular product for a particular application.

© American Time