

**Wireless
Analog Molded Case
Electric with Buzzer**



GENERAL INFORMATION

- Clock hour & minute hands: Black
- Clock second hand: Red
- Power: 115vac/220vac (or 24vac), 50/60 Hz
Continues operating for up to 1 hour during power outage
- Input voltage range (24vac): 115vac/220vac (110v to 240v)
24vac (15v to 30v)
- Plug: 115vac - 10A, 125v 2 prong polarized plug, 6 ft. cord
24vac - 4 position Molex®
Double dial clocks include (2) 4 position Molex® connectors to the clocks and terminate at the wall or ceiling with 3 wires (hot, neutral, ground)
- Rear panel indicator: Red LED indicates receiver is synchronizing to master time
Green LED indicates power applied
- Sound Level: 65 dBA at 10 ft.
- Receiver sensitivity: 10uV per meter
- Antenna type: External
- Time to synchronize: Average time to sync is 3 to 5 minutes. Syncs automatically 4 times per day
- Time accuracy: ±1 second to SiteSync IQ® System Controller
- Reset button: Press for 5 seconds to force time sync
- Warranty: Two Years

PHYSICAL / ENVIRONMENTAL SPECIFICATIONS

- Operating temperature: 41°F to 131°F
- Storage temperature: 41°F to 131°F
- Relative humidity: 0% - 95% Non-condensing

Note: These clocks are intended for use with a SiteSync IQ® Wireless Clock System.

ORDERING INFORMATION

Part #	Description
SQ46BAAD304B	10" Round, Surface, 120vac
SQ46BABD304B	10" Round, Surface, 24vac
SQ45BAAD?04B	10" Round, Flush, 120vac
SQ45BABD?04B	10" Round, Flush, 24vac
SQ56BAAD304B	12" Round, Surface, 120vac
SQ56BABD304B	12" Round, Surface, 24vac
SQ55BAAD?04B	12" Round, Flush, 120vac
SQ55BABD?04B	12" Round, Flush, 24vac
SQ66BAAD304B	15" Round, Surface, 120vac
SQ66BABD304B	15" Round, Surface, 24vac
SQ65BAAD?04B	15" Round, Flush, 120vac
SQ65BABD?04B	15" Round, Flush, 24vac
SQ92BAAD204B	12" Round, double dial ceiling mount, 120vac
SQ92BABD204B	12" Round, double dial ceiling mount, 24vac
SQ93BAAD204B	12" Round, double dial wall mount, 120vac
SQ93BABD204B	12" Round, double dial wall mount, 24vac
SQ62BAAD204B	15" Round, double dial ceiling mount, 120vac
SQ62BABD204B	15" Round, double dial ceiling mount, 24vac
SQ63BAAD204B	15" Round, double dial wall mount, 120vac
SQ63BABD204B	15" Round, double dial wall mount, 24vac

Note: Each buzzer clock is factory set to one of the six signal circuit relays in the system controller. The circuit number (1-6) must be indicated when placing an order.

Note:

If flush mounting, replace the ? in the part number with the number from the list below that will correspond with the system you're replacing. New flush mount installations require backboxes.

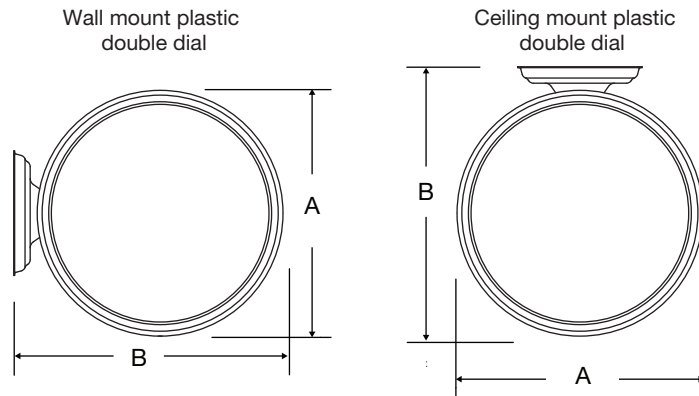
0 = Faraday 1 = National 5 = Simplex® 6 = Cincinnati/Edwards 7 = 2-hook 8 = Setco

Other dial styles and case colors available.

Note: Personalized dial option available. Add L to the end of the Part #.

Note: 12" surface mount clocks include security bracket.

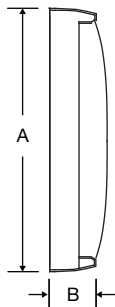
SIZE	OUTSIDE DIMENSIONS		
	A	B	C
Surface			
10"	10 ³ / ₈ "	2 ¹ / ₂ "	N/A
12"	13 ¹ / ₄ "	2 ¹ / ₂ "	N/A
15"	16"	2 ¹ / ₂ "	N/A
Flush			
10"	9 ⁷ / ₈ "	1 ³ / ₈ "	N/A
12"	13 ¹ / ₄ "	2"	N/A
15"	16"	2"	N/A
Double Dial			
12"	13 ¹ / ₄ "	15"	8 ⁵ / ₈ "
15"	16"	19 ¹ / ₄ "	8 ⁵ / ₈ "



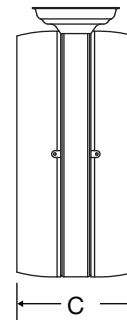
Flush mount plastic



Surface mount plastic



Plastic double dial profile



At American Time, we continually strive to improve our products to meet our customers' needs and to provide the best possible value. The above specifications are believed to be correct, are subject to change without notice and may otherwise vary from the above. Please call if you need verification of any specifications or the suitability of a particular product for a particular application.

© American Time