

Replacements for Standard® Electric with traditional mechanical movement

For Standard Electric Dual-Motored CR or GRC Series by American Time

1 - Secondary Clocks



Dial Style 04

Maintain your existing clock system with these economical direct replacements for Standard CR/GRC Series corrective clocks. In addition to our Two Year Warranty, we offer speedy delivery on most models.

- Precision Synchron® motor and heavy-duty brass gear train
- Durable black steel case
- Includes complete Molex® connector for easy installation
- Hourly and 12 hour correction
- Uses traditional mechanical movement (shown below)



Steel Case

Description	120vac Model No. (Original No.)	24vac Model No. (Original No.)	SAVE!	
			1-9 ea.	10+ ea.
10" Round Flush	X45BHGA804-WEB (J109130)	X45BHHA804-WEB (J109106)	\$299.95	\$284.95
12" Round Surface	X54BHGA404-WEB (J109136)	X54BHHA404-WEB (J109114)	\$299.95	\$284.95
12" Round Flush	X55BHGA804-WEB (J109131)	X55BHHA804-WEB (J109107)	\$299.95	\$284.95
12" Square Surface	X57BHGA404-WEB (J109146)	X57BHHA404-WEB (J109121)	\$319.95	\$303.95
12" Square Flush	X58BHGA804-WEB (J109141)	X58BHHA804-WEB (J109117)	\$319.95	\$303.95
15" Round Surface	X64BHGA404-WEB (J109138)	X64BHHA404-WEB (J109115)	\$319.95	\$303.95
15" Round Flush	X65BHGA804-WEB (J109133)	X65BHHA804-WEB (J109109)	\$319.95	\$303.95
12" Round DD wall	X53BHGA204-WEB	X53BHHA204-WEB	\$659.95	N/A
12" Round DD ceiling	X52BHGA204-WEB	X52BHHA204-WEB	\$659.95	N/A
12" Square DD wall	X51BHGA204-WEB	X51BHHA204-WEB	\$669.95	N/A
12" Square DD ceiling	X50BHGA204-WEB	X50BHHA204-WEB	\$669.95	N/A
15" Round DD wall	X63BHGA204-WEB	X63BHHA204-WEB	\$669.95	N/A
15" Round DD ceiling	X62BHGA204-WEB	X62BHHA204-WEB	\$669.95	N/A

Order Notes:

DD=Double dial

If running 24vac clocks, a step down transformer is necessary. See page 73.

Also available with Standard Electric logo. Add S to the end of the Model No.—ie. X54BHGA404S



CLOCK PARTS & ACCESSORIES

Replacement Movements

(set hands at 6:00)

Flush Backbox (use with

clocks on pages 54-57)

Replacement Clock Crystals (for Standard original steel

case clocks)



N109410110-WEB 120vac
\$259.95 ea.

N10941024-WEB 24vac
\$269.95 ea.

Includes hands for a 12" clock



CFB113-WEB \$17.95 ea.

10", 12", 16"
8"h x 5 5/8"w x 2 3/4"d

Part No.	Description	Each
1459712-WEB	Round Glass 12 5/8"	\$13.95
A1095-WEB	Round Glass 16 1/8"	\$19.95
A2071-WEB	Round Plexiglass 12 3/8" (007737)	\$33.95
108752-WEB	Square Glass 12 1/2" (sharp corners)	\$24.95

Save Money with AllSync Plus®!

Choose AllSync Plus to replace your Standard™ Electric CR/GRC series clocks and get a **FREE** extended warranty, plus **use up to 80% less energy** and run 5 times as many clocks without adding boosters!

- 15 minutes of continued operation during power outages—no batteries to install
- Includes LED indicator for improved diagnostics
- Easy “plug and play” installation
- Durable black steel case



Dial Style 04

Steel Case

Description	120vac Model No.	24vac Model No.	SAVE!			
			1-4 ea.	5-9 ea.	10-24 ea.	25+ ea.
10" Round Flush	U45BHGA804-WEB	U45BHHA804-WEB	\$159.95	\$151.95	\$145.95	\$139.95
12" Round Surface	U54BHGA404-WEB	U54BHHA404-WEB	\$159.95	\$151.95	\$145.95	\$139.95
12" Round Flush	U55BHGA804-WEB	U55BHHA804-WEB	\$159.95	\$151.95	\$145.95	\$139.95
12" Square Surface	U57BHGA404-WEB	U57BHHA404-WEB	\$169.95	\$161.95	\$155.95	\$149.95
12" Square Flush	U58BHGA804-WEB	U58BHHA804-WEB	\$169.95	\$161.95	\$155.95	\$149.95
15" Round Surface	U64BHGA404-WEB	U64BHHA404-WEB	\$179.95	\$171.95	\$165.95	\$159.95
15" Round Flush	U65BHGA804-WEB	U65BHHA804-WEB	\$179.95	\$171.95	\$165.95	\$159.95
12" Round DD wall	U53BHGA204-WEB	U53BHHA204-WEB	\$399.95	N/A	N/A	N/A
12" Round DD ceiling	U52BHGA204-WEB	U52BHHA204-WEB	\$399.95	N/A	N/A	N/A
12" Square DD wall	U51BHGA204-WEB	U51BHHA204-WEB	\$419.95	N/A	N/A	N/A
12" Square DD ceiling	U50BHGA204-WEB	U50BHHA204-WEB	\$419.95	N/A	N/A	N/A
15" Round DD wall	U63BHGA204-WEB	U63BHHA204-WEB	\$449.95	N/A	N/A	N/A
15" Round DD ceiling	U62BHGA204-WEB	U62BHHA204-WEB	\$449.95	N/A	N/A	N/A

Order Notes:

DD=Double dial

If running 24vac clocks, a step down transformer is necessary. See page 73.

CLOCK PARTS & ACCESSORIES

Replacement Molex® Connectors

These Molex® connectors make installation a snap! Choose the clock half, wall half or a complete set.

CC1172C-WEB \$6.95

Clock half only

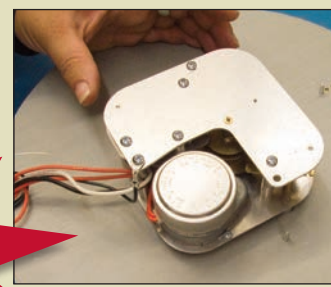
CC1172W-WEB \$6.95

Wall half only



CC1172-WEB \$12.95

Complete set 5-wire



We Repair Standard Electric Clocks!

Replacements for Standard® Electric

For Standard Electric Dual-Motored CR or GRC Series by American Time

with traditional mechanical movement



Dial Style 04

Our durable, economical replacements for Standard Electric are manufactured by a highly trained and experienced production staff and backed by a Two Year Warranty.

- Precision Synchron® motor and heavy-duty brass gear train
- Impact-resistant black molded case
- Includes complete Molex® connector for easy installation
- Shatter-resistant safety crystal
- Hourly and 12 hour correction
- Uses traditional mechanical movement *(shown below)*



Molded Case

Description	120vac Model No.	24vac Model No.	SAVE!	
			1-9 ea.	10+ ea.
10" Round Flush	X45BAGA804-WEB	X45BAHA804-WEB	\$289.95	\$279.95
12" Round Flush	X55BAGA804-WEB	X55BAHA804-WEB	\$289.95	\$279.95

Order Notes:

If running 24vac clocks, a step down transformer is necessary. See page 73.

Also available with SETCO logo. Add S to the end of the Model No. i.e. X54BAGA304S



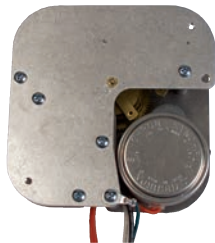
FYI Synchronous Wired Correction Protocol for Standard Electric CR & GRC 109106-109155, J109106-J109155 and 105047-105066

120vac or 24vac applied to the run motor will cause normal operation. A 15 minute correction signal on the correction motor line will cause a 12 hour correction from 5:12:00 to 5:28:00. This will occur twice daily (AM and PM). Run motor power is connected during the 12 hour correction. A 29 second signal is applied to the correction motor line from XX:59:30 to XX:59:59 to cause hourly corrections. During hourly corrections, power is disconnected from the run motor line.

CLOCK PARTS & ACCESSORIES

Replacement Movements

(set hands at 6:00)



N109410110-WEB 120vac
\$259.95 ea.

N10941024-WEB 24vac
\$269.95 ea.

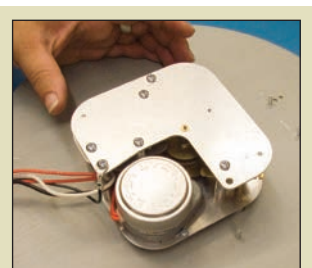
Includes hands for a 12" clock

Replacement Polycarbonate Safety Crystal



H000855-WEB 10" \$9.95
SL1201-WEB 12" \$9.95

For use with American Time molded case clocks



**We Repair
Standard Clocks!**
See page 79 for pricing.

Save Money with AllSync Plus®!

Choose AllSync Plus with to replace your Standard™ Electric clocks and get a **FREE** extended warranty, plus **use up to 80% less energy** and run 5 times as many clocks without adding boosters!

- Accurate to ±1 second to the master
- “Plug and play”—automatically detects correction signal on installation
- Impact-resistant black molded case
- Shatter-resistant safety crystal



Dial Style 04

Molded Case

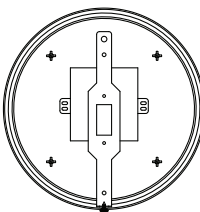
	Model No.	Description	SAVE!			
			1-4 ea.	5-9 ea.	10-24 ea.	25+ ea.
10" Round Surface	U44BAGA304-WEB	U44BAHA304-WEB	\$149.95	\$141.95	\$135.95	\$129.95
10" Round Flush	U45BAGA804-WEB	U45BAHA804-WEB	\$149.95	\$141.95	\$135.95	\$129.95
12" Round Surface	U54BAGA304-WEB	U54BAHA304-WEB	\$149.95	\$141.95	\$135.95	\$129.95
12" Round Flush	U55BAGA804-WEB	U55BAHA804-WEB	\$149.95	\$141.95	\$135.95	\$129.95
12" Round DD wall	U53BAGA204-WEB	U53BAHA204-WEB	\$369.95	N/A	N/A	N/A
12" Round DD ceiling	U52BAGA204-WEB	U52BAHA204-WEB	\$369.95	N/A	N/A	N/A

Order Notes:

DD=Double dial

If running 24vac clocks, a step down transformer is necessary. See page 73.

12" AllSync Plus molded case surface clocks include a security bracket.



REPLACEMENT PARTS & ACCESSORIES

American Time carries thousands of replacement clock parts in stock. Call our knowledgeable customer service reps for help.



Old Style

Bezel Clip
J107789-WEB \$2.50 ea.
(old style)



Speed Nut
A1500-WEB \$.50 ea.
(For WEB 7789 and 010131 clips)



Synchron Motor (001835) for Standard™ Electric Master Clocks
A12RC-5-6-110V-WEB 1rpm \$49.95
See page 83 for quantity pricing.
Older Master Motors Specify Master Model



Part No.	Description	Each
N109410110-WEB	Complete Dual-Motor Mvmt 120/120vac	\$259.95
N10941024-WEB	Complete Dual-Motor Mvmt 24/24vac	\$269.95

Includes hands for a 12" clock (set hands at 6:00)



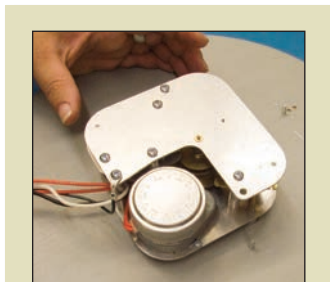
Ref.	Part No.	Description	1-4 ea.	5-9 ea.	10-24 ea.	25+ ea.
2A	1444-WEB	Drive Motor, 120vac, 1rpm	\$39.95	\$35.95	\$33.95	\$29.95
	CX5396-WEB	Drive Motor w/Terminals, 120vac, 1rpm	\$44.95	\$41.95	\$38.95	\$35.95
	6743-WEB	Drive Motor, 24vac, 1rpm	\$39.95	\$35.95	\$33.95	\$29.95



Ref.	Part No.	Description	1-4 ea.	5-9 ea.	10-24 ea.	25+ ea.
2B	1445-WEB	Reset Motor, 120vac, 60rpm	\$39.95	\$35.95	\$33.95	\$29.95
	CX5397-WEB	Reset Motor w/Terminals, 120vac, 60rpm	\$44.95	\$41.95	\$38.95	\$35.95
	6761-WEB	Reset Motor, 24vac, 60rpm	\$39.95	\$35.95	\$33.95	\$29.95
	CX5399-WEB	Reset Motor w/Terminals, 24vac, 60rpm	\$44.95	\$41.95	\$38.95	\$35.95

Your Repair...Your Way!

No budget for new clocks? Need to repair an existing clock? Send it to us. We will repair your mechanical movement or replace it with the AllSync Plus circuit board movement. The repair cost is less, you'll receive a **FREE** extended warranty *and use up to 80% less energy!* See pages 77-79 for more information.



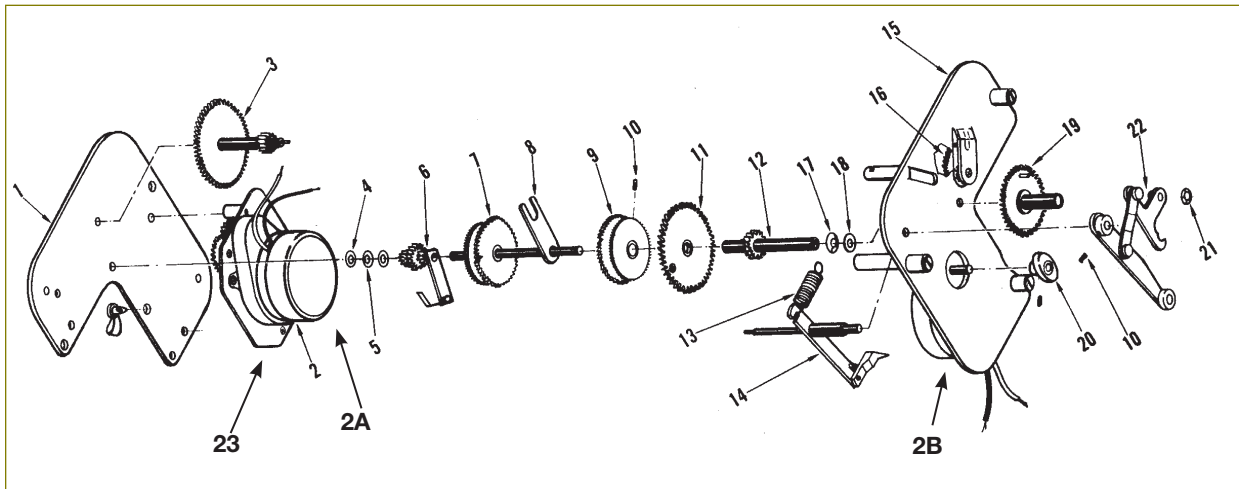
Replace with the mechanical movement

2 YR
WARRANTY



Replace with the AllSync Plus® Movement

3 YR
WARRANTY



Ref. No.	Part No.	Description	1-9 ea.	10-19 ea.	20+ ea.
1	CX753-WEB	Back Plate Assembly (aluminum) (A107-753)	\$6.95	\$6.39	\$5.91
	CX160-WEB	Back Plate w/gear (aluminum) (A2160) (replaces lexan back plate #109-512)	\$35.95	\$33.07	\$30.56
3	CX809-WEB	Minute Intermediate Wheel Assembly (A107-809)	\$15.95	\$14.67	\$13.56
4	6674-WEB	Nylon Washer-Rear	\$0.70	\$0.64	\$0.60
5	A3253-WEB	Rear Friction Spring (A108-095)	\$0.70	\$0.64	\$0.60
6	CX815-WEB	Second Driving Gear Assembly (A107-815)	\$17.95	\$16.51	\$15.26
7	CX808S-WEB	Second Ratchet Wheel & Staff (A107-808) (includes sweep hand CH159) (A006159)	\$29.95	\$27.55	\$25.46
8	J103587-WEB	Spacer Plate (A103-587)	\$1.05	\$0.97	\$0.89
9	CX811-WEB	Minute Ratchet Wheel Assembly (A107-811)	\$19.95	\$18.35	\$16.96
10	7643S-WEB	Set Screw	\$1.00	\$0.92	\$0.85
11	CX810-WEB	Minute Drive Pawl Gear Assembly (A107-810)	\$18.95	\$17.43	\$16.11
12	CX754-WEB	Minute Sleeve Assembly (A107-754)	\$13.95	\$12.83	\$11.86
13	108761-WEB	Reset Pawl Spring	\$1.50	\$1.38	\$1.28
14	CX812-WEB	Reset Lever Assembly (A107-812)	\$11.95	\$10.99	\$10.16
15	CX807-WEB	Front Plate Assembly w/Gear (aluminum) (A107-807)	\$39.95	\$36.75	\$33.96
17	605523-WEB	Front Friction Spring	\$1.25	\$1.15	\$1.06
18	109569-WEB	Nylon Washer	\$0.70	\$0.64	\$0.60
19	CX758-WEB	Hour Wheel (A107-758)	\$12.95	\$11.91	\$11.01
20	CX424-WEB	Reset Cam Assembly (A108-424)	\$8.95	\$8.23	\$7.61
21	455-WEB	Retaining Ring	\$1.00	\$0.92	\$0.85
22	CX620-WEB	Reset Lever Assembly (A103-620)	\$23.95	\$22.03	\$20.36
23	CX814-WEB	Motor Plate w/Gear (A107-814)	\$15.95	\$14.67	\$13.56
	N108448-WEB	Modification Kit <i>no motor</i> (replaces old style linkage black motors)	\$37.95	\$34.91	\$32.26
	N108449-WEB	Modification Kit (<i>w/motor</i>)	\$59.95	\$55.15	\$50.96
	3383-WEB	Retainer Pin for Lexon Back Plate	\$0.55	\$0.51	\$0.47