

TITLE: ASKIT-02 ASSEMBLY INSTRUCTIONS		
INSTRUCTION SHEET: 3093	REVISION: 05	EFFECTIVE: 06-01-2020

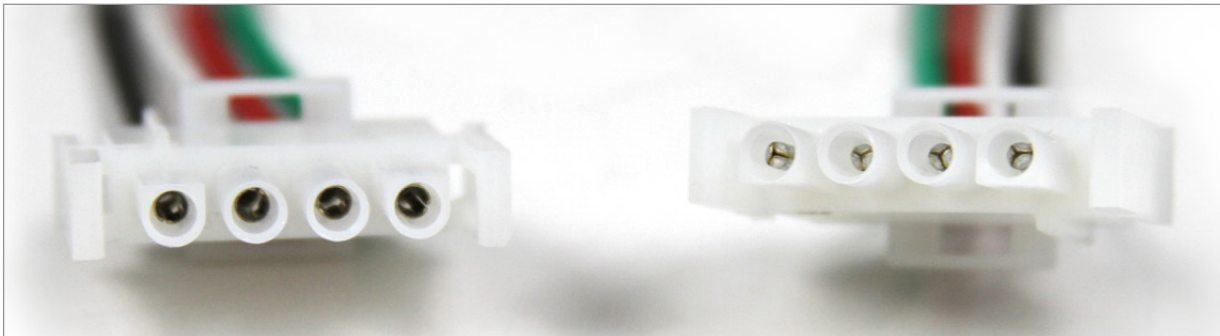
Note: It is assumed that the removal of the old movement/motors have been completed and the back plate is ready for assembling the new AllSync movement/dustcover assembly onto the back plate. When tearing down clock, retain all the bezel clips and all the fasteners for the adapter plate, dustcover, and ground wire installation.

This Instruction Manual covers clocks with Simplex plastic, Simplex metal round and Simplex metal square backplates.

New Installation Note

Warning:

While both ends of the wire harness look the same, they are not. The male pin connector is for the clock side. The female pin connector is for the wall side and can be cut off if there is no mating connector available.



Female pin connection to wall.
Cut this end if necessary.

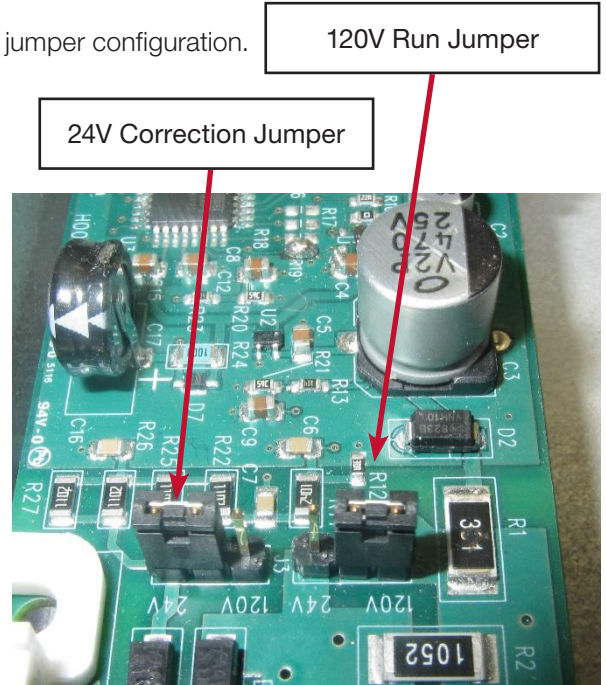
Male pin connection to clock.
DO NOT CUT.

If repairing a 120V clock with a 24V correction or a 24V clock with a 24V correction, please see section below. Otherwise skip to the clock repair section.

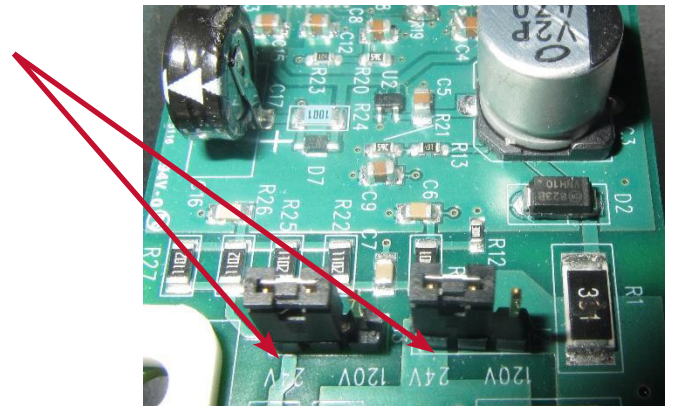
CAUTION: It is strongly recommended that ESD grounding attire be utilized. There is potential for electrical static discharge (ESD), which may damage components.

120V/24V CORRECTION OR 24V/24V CLOCKS

1. If assembling a 120V run/24V correction clock, see photo on right for jumper configuration.

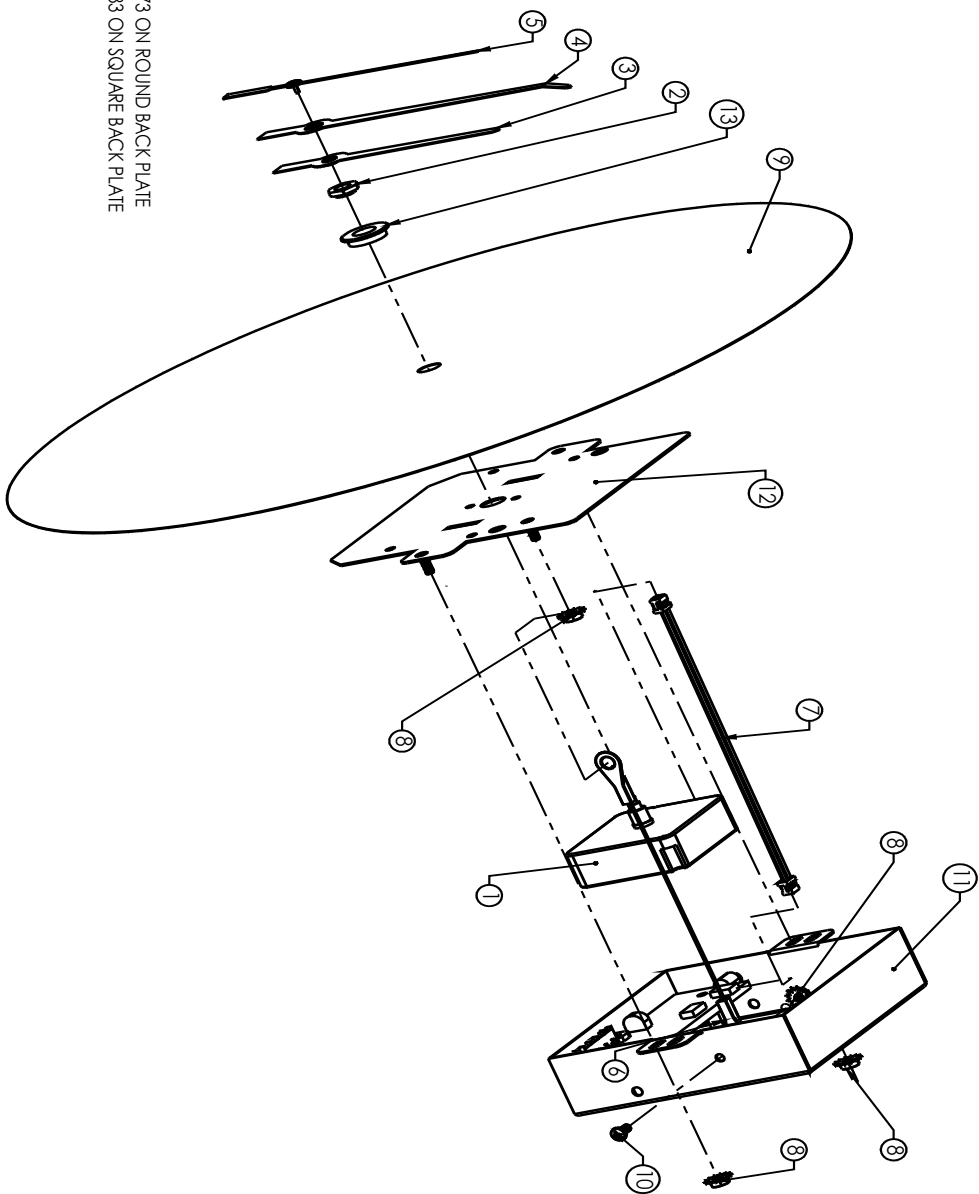


2. If assembling a 24V run/24V correction, move both jumpers to the 24V pins.



ASKIT-02

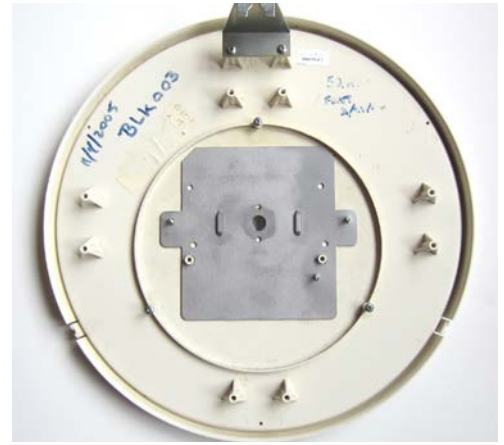
ITEM NO.	PART #	DESCRIPTION	QTY.	ITEM NO.	PART #	DESCRIPTION	QTY.
1	H004640	MOVEMENT	1	8	18965	NS NUT KEPS # 6-32 STEEL ZINC	4
2	PR102190	NUT	1	9	DI01	DIAL/BACK PLATE	1
3	H004585	Hand, Hr, 12" Style H, Headway Mvmt	1	10	A1167	PHILLIPS PAN HD 6-32 X 5/16	1
4	H004586	Hand, Min, 12" Style H, Headway Mvmt	1	11	ALLSYNC Dust Cover Assy.	Dust Cover Assembly	1
5	5119.5	Hand, Sweep, Red, Hechinger Movement	1	12	H003871	ADAPTER PLATE, DUSTCOVER, ALLSYNC PLUS, SETCO FOR REPAIRS	1
6	H002659	EXTENSION 6" GROUND	1	13	H003873 /H003883	ADAPTER BUSHING, SIMPLEX ROUND, ALLSYNC PLUS, REPAIRS	1
7	H003729	WIRING HARNESS, MVMT TO TRANSLATOR 8", ALLSYNC PLUS	1				



Note#13
 USE H003873 ON ROUND BACK PLATE
 H003883 ON SQUARE BACK PLATE

MOVEMENT APPLICATION

1. Install adapter plate (**H003871**)
2. For plastic, install with the angled corners facing up.

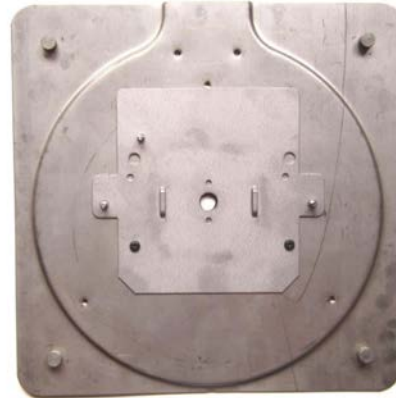


3. For metal, install with the angled corners facing down. Fasten adapter plate on the clock with screws from clock teardown.

Round Metal



Square Metal



4. Install center bushing. **H003873** for round clocks or **H003883** for square clocks (smaller center hole).

Round
H003873



Square
H003883



5. Insert movement (H004640) through the center hole from the back of the bezel. The movement should seat between the two bridges when properly aligned.



6. Install mounting center nut (PR102190) and tighten. If the backplate has too small a hole for the brass bushing, use the mounting center nut and no bushing. Movement should not be able to move once completely secured.

Plastic Round



Metal Round



Square



Square w/o Bushing



HAND INSTALLATION

1. Align the hour hand with the 12:00 position and push down onto the shaft all the way down to the hour shoulder.

1.1 If the hour hand needs to be adjusted, it must be pulled off the shaft and re-aligned.

2. Apply the minute hand to the clock at the 12:00 position and push down onto the shaft and push the hand all the way down to the minute shoulder.

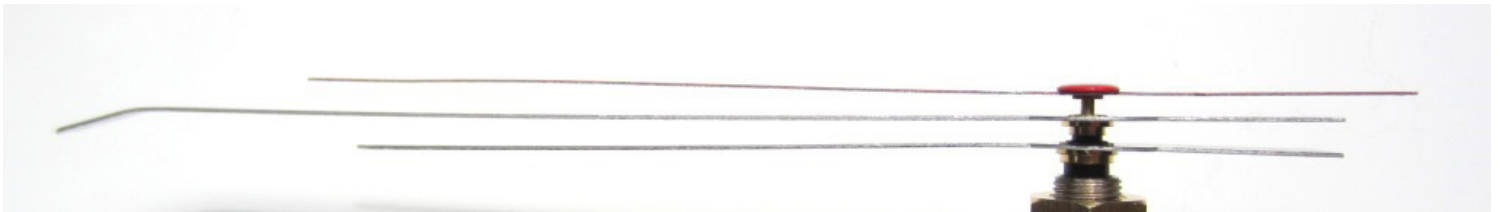
Note: Tip of minute hand is factory-bent to accommodate the crystal

3. Apply the sweep by aligning it to the 12:00 position, place spacer directly under the sweep so that it is in between the minute hand and the sweep hand.

4. Push down on the sweep hand until the sweep contacts the spacer.

5. Remove the spacer.

6. Ensure the spacing between the hands is as even as possible as shown in the picture.

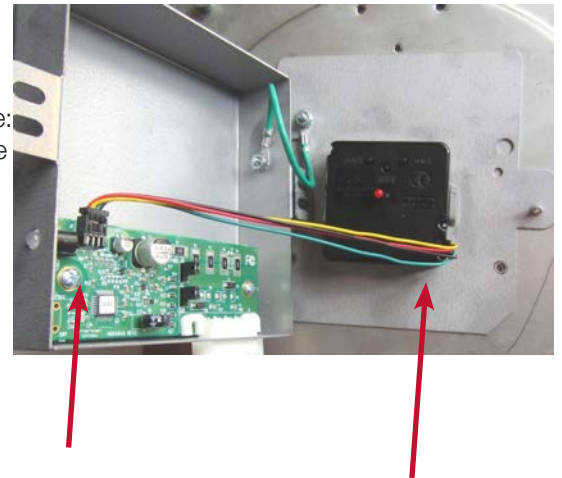


GROUND WIRE AND CABLE HARNESS

1. Add ground wire (**H002659**) to the inside of the dustcover with a screw (**A1167**) and nut (**18965**). Screw goes in from the outside and nut is fastened on the inside of the dustcover.
2. Fasten the free end of the ground wire to the stud on the adapter plate with a nut.

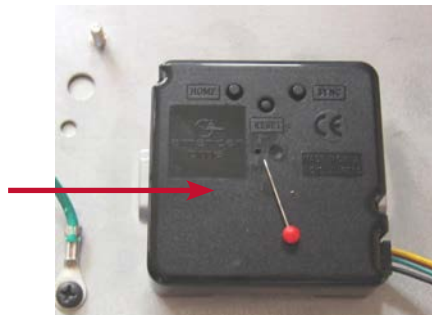


3. Take one end of the cable harness and insert into the movement with the yellow and green wires facing up. Take the other end and insert into the board with the yellow and green wires facing away from the dustcover. Note: the cable plug is keyed and will only insert if properly oriented -- do not force the plug into the board terminal.



DUSTCOVER INSTALLATION

1. Remove the pin from the movement.



2. With the back of the dustcover facing upwards, place dustcover/bracket assembly down onto the adapter plate and over the two studs on the backplate. Fasten with two nuts (**18965**).
3. Clock is ready to be reinstalled into the bezel/crystal assembly.



IMPORTANT: After installing into the bezel/crystal assembly, check to make sure that the hands are not touching each other, the crystal, or the dial, as this will cause the hands to stop or lose time.

Round Plastic Clock



Round Metal Clock



Square Metal Clock

