

6

Confirm Installation and Name New Device

1. Click on Displays in the menu bar at the top of the page. The New Device will display as shown below in the portal.

DISPLAY LIST | SCH001

Status	Integrator	Last Communication	Input 1	Input 2
	Site Integrator Inspector	2/10/2017 8:21 AM	Fire Alarm	Lockdown

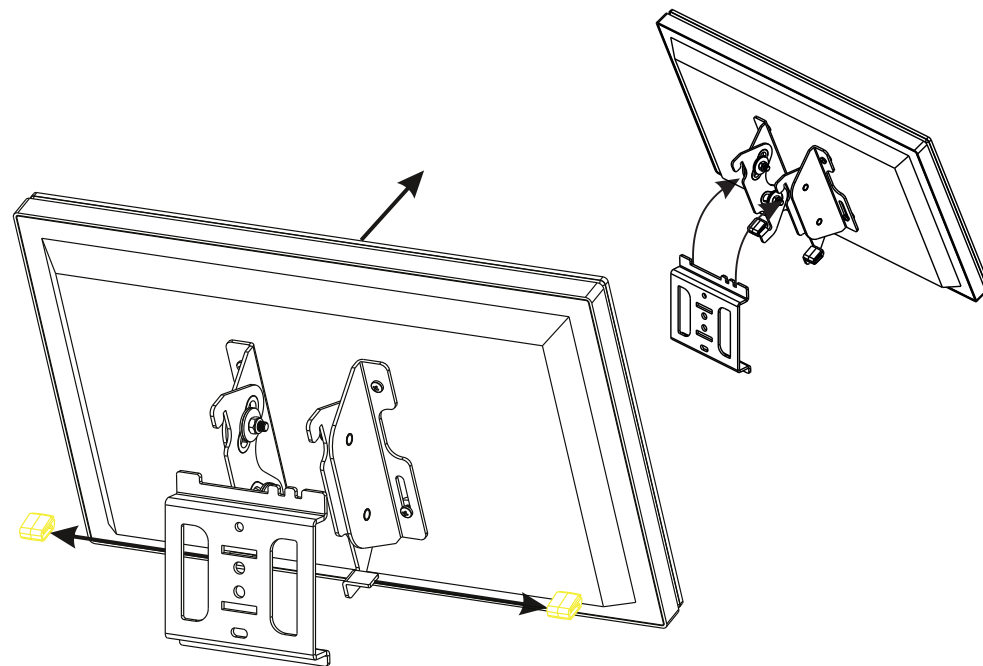
Signal	Status	Sync	Display ▲	Layout	Configuration	Bell Group	Msg
			New Device (1/31/2017) Inspector	Default			

2. Click on the New Device name and change the Display Title to something more descriptive like English Class Room 101. Click Save on the bottom left.
 - If the status or the sync icons are red, reference the EverAlert Installation and Operation Manual for Troubleshooting.

7

Display Removal

1. Grasp the yellow clips on the bottom of the adjustable brackets and pull out towards the side to remove them.
2. Lift the display upwards and towards the operator to remove the display.



EverAlert™ Display Quick Start Installation Guide



Please read this first!

If this is your first installation or you have questions at any time during this process, please call American Time toll free at **800-328-8996**.

1

Pre-Installation

1. Verify with your IT Staff:
 - Dynamic Host Configuration Protocol (DHCP) is enabled.
 - Note:** Currently the EverAlert Displays do not support static IP address configuration.
 - Firewall port 123 is open for UDP data transfer.
 - Internet Connection will be needed with Wi-Fi or Ethernet 10/100Base-T
 - i. Additional information for Wi-Fi; SSID, Password & Security Type
2. Choose a location that is near an AC power receptacle.

2

Unpack the box

- Remove the components from the box. Save the packing materials in case you need them later.

3

Check the contents

1. EverAlert Display Box
 - i. Quick Start Guide
 - ii. EverAlert Display
 - iii. 12vdc Power Supply Brick (includes 3 power cord options)
2. Mounting Bracket Kit Box (see section 4 for part identification)
 - A. Four white plastic spacers
 - B. Four M4 X 12 screws
 - C. Two 6 mm screws
 - D. Two monitor adjustable brackets
 - E. One wall mount base
 - F. One power supply bracket
 - G. Two nuts # 6-32
 - H. Plastic Cement anchors

american  time.

Integrated Solutions

phone: **800-328-8996**

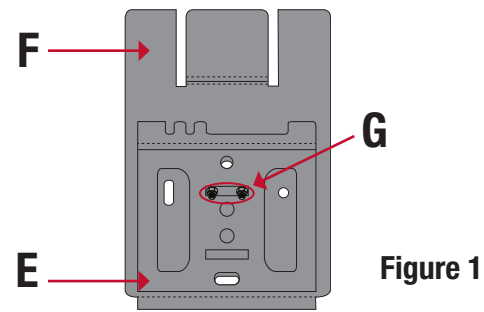
fax: **800-789-1882**

online: **american-time.com**

mail: **140 3rd St. So.; PO Box 707, Dassel, MN 55325-0707**

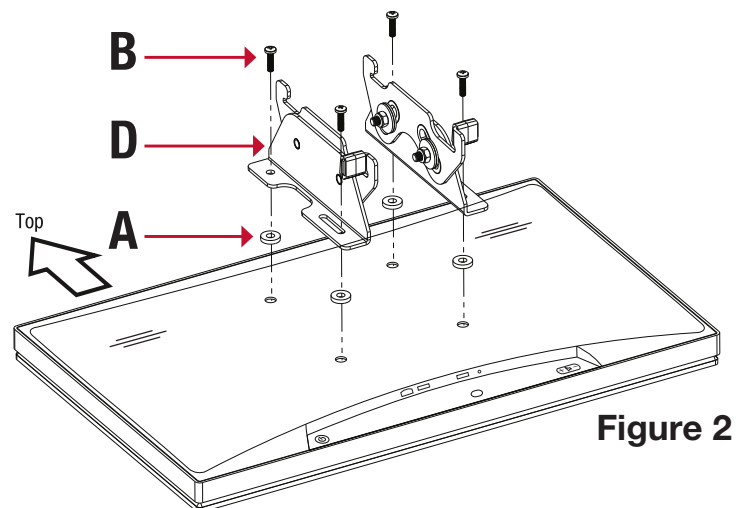
4 Mounting

1. Preassemble the wall mount base to the power supply bracket.
 - a. Lay the power supply bracket (F) on a flat surface.
 - b. Position the bracket base (E) over the studs as illustrated in figure 1.
 - c. Using the two nuts (G) supplied, tighten the wall mount base to the power supply bracket.



2. Attach the adjustable brackets to the EverAlert Display
 - a. Remove the Display from the styrofoam wrap and lay it face down on the styrofoam wrap it came in.
 - b. Line up the four white plastic spacers (A) and the two adjustable brackets with the four holes on the back of the display as shown in figure 2. Secure with 4 M4X12 (B) screws.

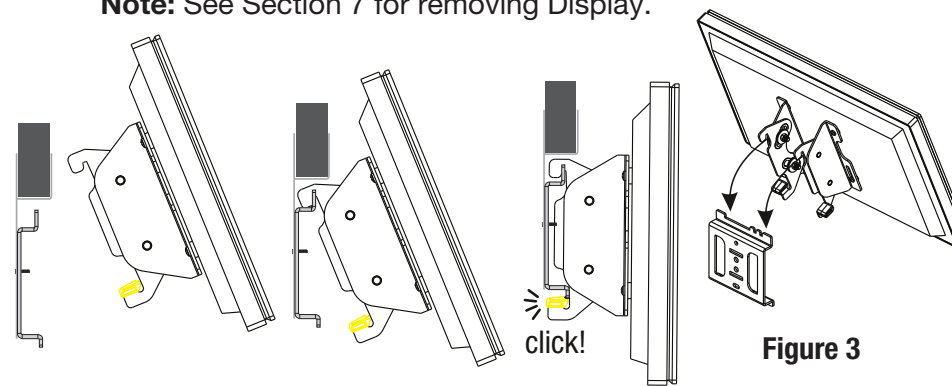
Note: Picture shown is in landscape orientation. If mounting the display in portrait orientation, the brackets will need to rotate 90 degrees in either direction from the position shown in the picture. Orientation will be fixed after provisioning. Reference the EverAlert Installation and Operation Manual for further information.
 - c. Adjust the brackets to the desired position and tighten the bolts down. Brackets can adjust to a maximum of 10 degrees up or 10 degrees down.



4 Mounting (cont)

3. Mounting EverAlert Display to the wall
 - a. Using the wall mount assembly from Section 4-1, install two, 6 mm screws (C) directly into a stud or into provided cement anchors (H). Make sure that the power supply mount is facing upwards.
 - b. Insert the power supply into the top slot of the power supply bracket.
 - c. Take the display and insert the top of the adjustable brackets onto the top of the wall mount base and pivot display down to lock into the bracket base. The yellow locking clips should lock into place.

Note: See Section 7 for removing Display.



5 Assigning an EverAlert Display to the Management Portal

There are two simple ways to provision the Displays to connect to the management portal. The first option uses a wired LAN cable on a DHCP enabled network with internet access. The second option uses a USB key that is created from the management portal and contains the encrypted Wi-Fi credentials for connecting the device to your network and Site.

Warning: Before continuing installation it is assumed that the user has already received the welcome email from American Time and has logged onto the portal and predefined the Wi-Fi credentials.

1. Configuration using wired LAN on a DHCP Network (Option 1)

All EverAlert Displays have been preconfigured to a specific Site using their MAC address.

 - a. Make sure the Ethernet cable is plugged into the display.
 - b. Go to Step 3.
2. Configuration using USB Key (Option 2)
 - a. Login to <https://portal.american-time.com>
 - b. If you have more than one Site setup, select the Site where you would like to install the Display.
 - c. Click on the Default Config under the Admin tab.

5 Assigning an EverAlert Display to the Management Portal (cont)

- d. Make sure the desired wireless credentials have been entered. If they are blank and the intention is to use Wi-Fi network, enter them now and click Save Only.
- e. Click Create Key on bottom left of the screen. The encrypted file is now made and stored in the downloads directory on your pc.
- f. Go to the downloads directory on your pc and copy the SecurityKey.txt file to a USB flash drive.

Note: If this process has been done before on your pc, there might be more than one security file in this directory with a number suffix like SecurityKey2.txt. Be sure to identify the correct file and rename it to SecurityKey.txt if it is numbered.
3. Power up the EverAlert display by plugging into an AC wall receptacle.
4. While the device is loading, the EverAlert software will check its version and automatically download a new version if required.
5. Once the software update has been loaded the EverAlert Display will flash to a provisioning screen that says plug in security key or device address on the portal.

american time.

Tue 2/21/17



6. If using wired ethernet skip to Step 8.
7. Insert USB flash drive into one of the two USB ports on the bottom of the EverAlert Display. Once the key is read the screen will show Security Key Found and update the Wi-Fi credentials on the EverAlert Display and connect to the Portal.
8. After the device has established a connection the Portal will respond.
9. Display will now load its predefined default Clock Layout and the EverAlert Display is ready for use.