

TITLE: ASKIT-02 ASSEMBLY INSTRUCTIONS

INSTRUCTION SHEET: 3093

REVISION: 03

EFFECTIVE: 03-27-2018

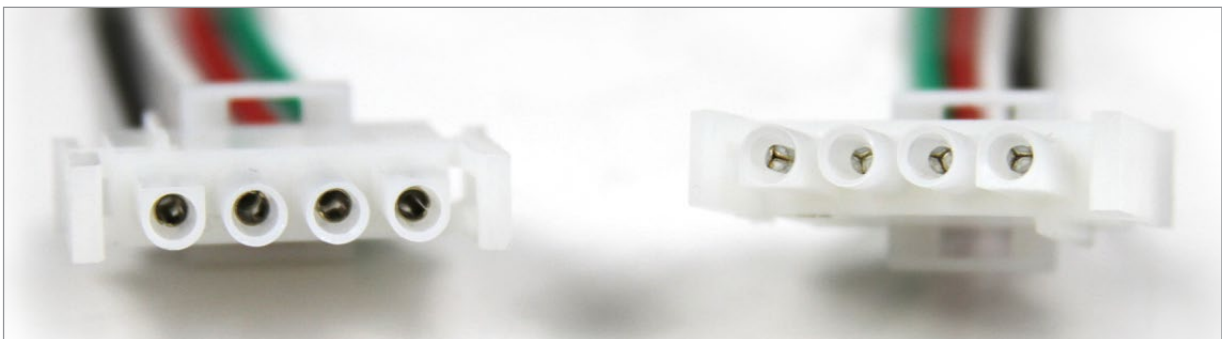
Note: It is assumed that the removal of the old movement/motors have been completed and the back plate is ready for assembling the new AllSync movement/dustcover assembly onto the back plate. When tearing down clock, retain all the bezel clips and all the fasteners for the dustcover and ground wire installation.

This Instruction Manual covers clocks with Simplex plastic, Simplex metal round and Simplex metal square backplates.

New Installation Note

Warning:

While both ends of the wire harness look the same, they are not. The male pin connector is for the clock side. The female pin connector is for the wall side and can be cut off if there is no mating connector available.



Female pin connection to wall.
Cut this end if necessary.

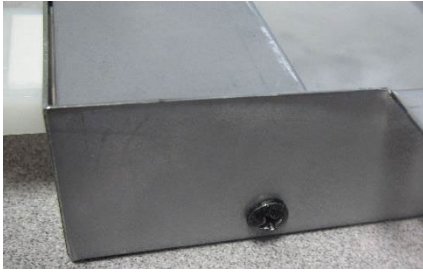
Male pin connection to clock.
DO NOT CUT.

If repairing a 120V clock with a 24V correction or a 24V clock with a 24V correction, please see section below. Otherwise skip to the clock repair section.

CAUTION: It is strongly recommended that ESD grounding attire be utilized. There is potential for electrical static discharge (ESD), which may damage components.

120V/24V CORRECTION OR 24V/24V CLOCKS

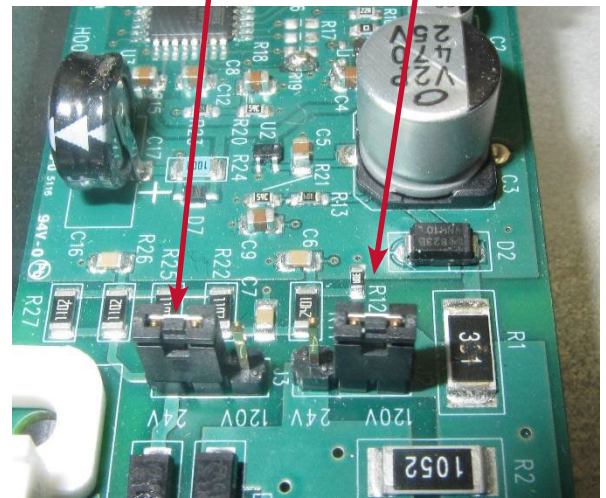
1. Remove the two screws from both sides of the dustcover that are securing the dustcover baffle and remove the baffle.



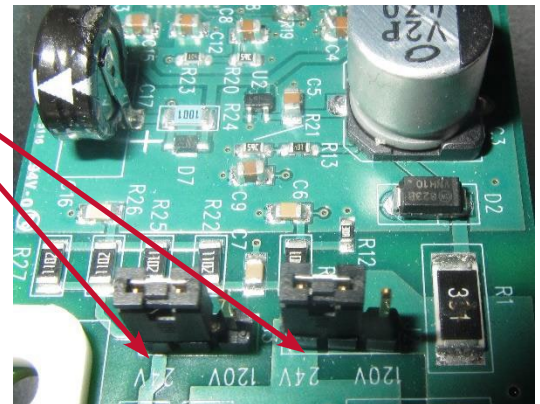
120V Run Jumper

24V Correction Jumper

2. If assembling a 120V run/24V correction clock, see photo on right for jumper configuration.

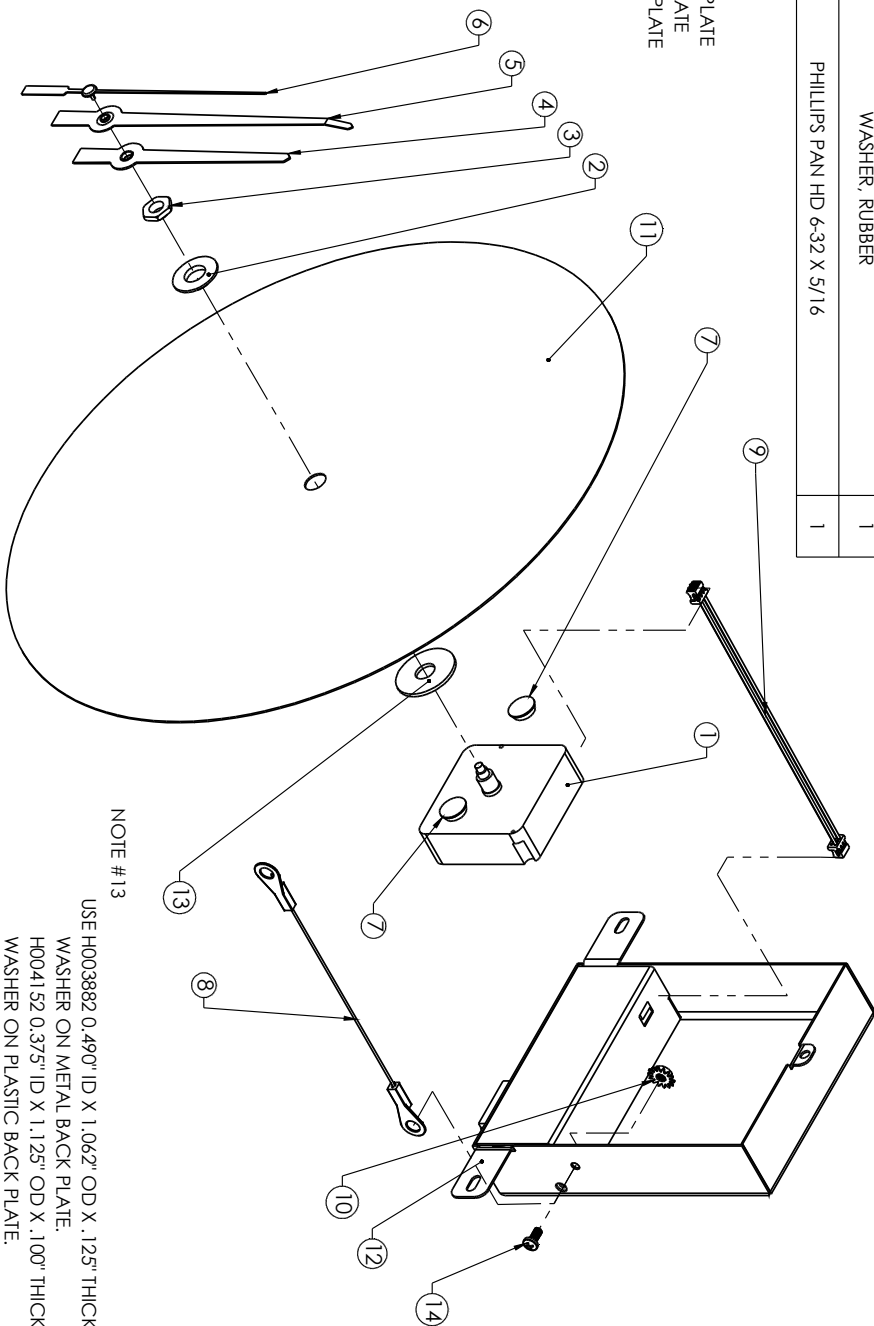


3. If assembling a 24V run/24V correction, move both jumpers to the 24V pins.
4. Once complete with the jumper configuration, reinstall the dustcover baffle back onto the dustcover using the same screws removed in step 1.



ASKIT-02

ITEM NO.	PART NUMBER	DESCRIPTION	QTY.
1	H004640	MOVEMENT	1
2	H003873, H003874, H003883	ADAPTER BUSHING, SIMPLEX STEEL, ALLSYNC PLUS, REPAIRS	1
3	PR102190	NUT	1
4	H004585	Hand, Hr, 12" Style H, Headway Mvmt	1
5	H004586	Hand, Min, 12" Style H, Headway Mvmt	1
6	5119-S	Hand, Sweep, Red, Hechinger Movement	1
7	H002615	Rubber Bumpers(SJ-5012) 3M Bumpson Block	2
8	H002659	EXTENSION 6" GROUND	1
9	H003729	WIRING HARNESS, MVMT TO TRANSLATOR, 8" ALLSYNC PLUS	1
10	18965	NS NUT KEPS # 6-32 STEEL ZINC	1
11	ddl	DIAL/BACK PLATE	1
12	H004871 Assembly	Dust Cover Assembly	1
13	H003882 & H004152	WASHER, RUBBER	1
14	A1167	PHILLIPS PANI HD 6-32 X 5/16	1



Note#2
 USE H003873 ON PLASTIC BACK PLATE
 H003874 ON METAL BACK PLATE
 H003883 ON SQUARE BACK PLATE

NOTE #13
 USE H003882 0.490" ID X 1.062" OD X .125" THICK
 WASHER ON METAL BACK PLATE.
 H004152 0.375" ID X 1.125" OD X .100" THICK
 WASHER ON PLASTIC BACK PLATE.

MOVEMENT APPLICATION

1. Install center bushing. **H003873** for plastic, **H003874** for metal or **H003883** for square metal (smaller center hole).

Plastic
H003873



Metal
H003874



Square
H003883



2. Put rubber washer **H003882** (washer for metal) or **PR100261** (washer for plastic) on the clock movement (**H004640**) to fit it to the backplate.

Metal
H003882



Plastic
H004152



3. Insert movement (**H004640**) through the center hole from the back of the bezel.

4. Install mounting center nut (**PR102190**) and tighten. If the backplate has too small a hole for the brass bushing, use the mounting center nut and no bushing. Movement should not be able to move once completely secured.

PR102190



Plastic



Metal



Square



5. If needed install anti-rotation bump-ons (H002615) to each side of the movement. Bump-ons should be approximately 1/2" down from the top of the movement & touch each side of the mvmt.



HAND INSTALLATION

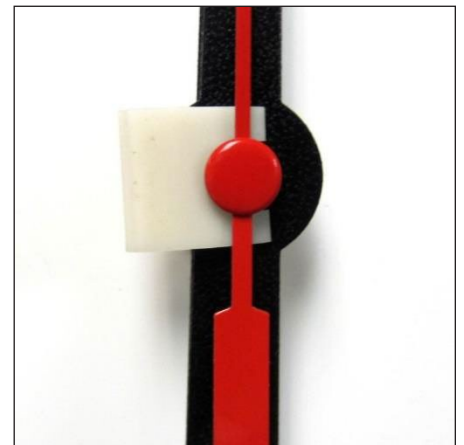
1. Align the hour hand with the 12:00 position and push down onto the shaft all the way down to the hour shoulder.

- 1.1 If the hour hand needs to be adjusted, it must be pulled off the shaft and re-aligned.

2. Apply the minute hand to the clock at the 12:00 position and push down onto the shaft and push the hand all the way down to the minute shoulder.

Note: Tip of minute hand is factory-bent to accommodate the crystal

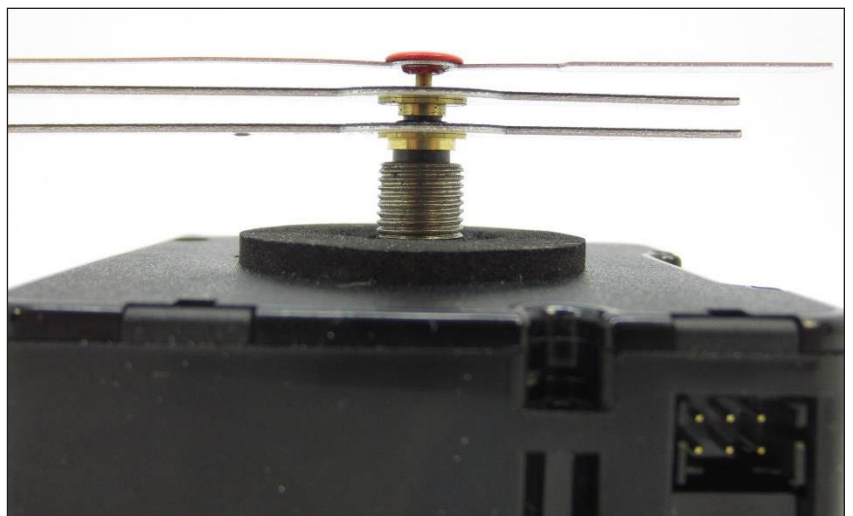
3. Apply the sweep by aligning it to the 12:00 position, place spacer directly under the sweep so that it is in between the minute hand and the sweep hand.



4. Push down on the sweep hand until the sweep contacts the spacer.

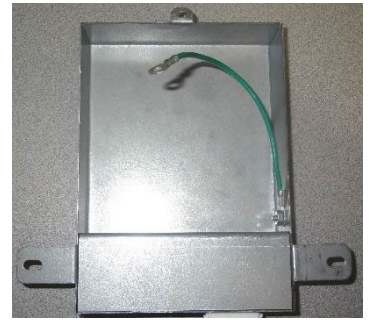
5. Remove the spacer.

6. Ensure the spacing between the hands is as even as possible as shown in the picture.

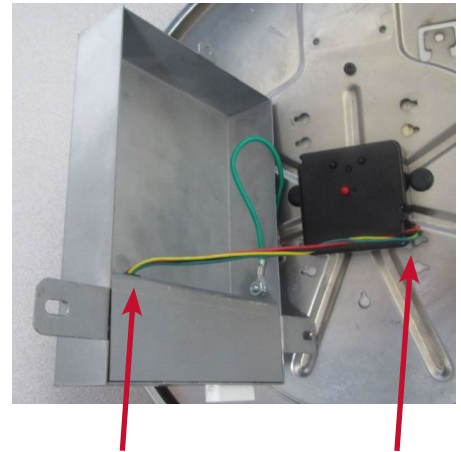


GROUND WIRE (Metal Backplates) AND CABLE HARNESS

1. For metal backplates, add ground wire (**H002659**) to the inside of the dustcover with a **A1167** screw and **18965** nut. Screw goes in from the outside and nut is fastened on the inside of the dustcover.
2. Fasten the free end of the ground wire to the bezel on the clock.



3. Take one end of the cable harness and insert into the movement with the yellow and green wires facing up. Take the other end and insert into the board through the hole in the baffle with the yellow and green wires facing away from the dustcover.



DUSTCOVER INSTALLATION

1. Remove the red pin from the movement.



2. With the back of the dustcover facing upwards, place dustcover/bracket assembly down onto the backplate, line up the three tabs with the three holes in the backplate and fasten to the backplate.



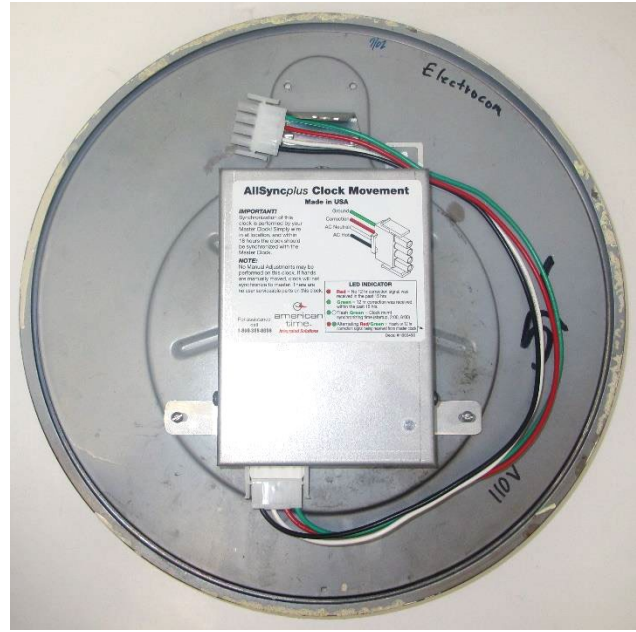
3. Clock is ready to be reinstalled into the bezel/crystal assembly.

IMPORTANT: After installing into the bezel/crystal assembly, check to make sure that the hands are not touching each other and the crystal as that will cause the hands to stop.

Plastic Clock



Metal Clock



Square Clock

