



FEATURES

- 3 Year Warranty
- UL/cUL Listed - 12" & 15" Surface mount only
- Microprocessor controlled movement
- 15 minutes of backup power (no batteries required)
- Accuracy to within ±1 second of a master clock
- Reduced power consumption
- Attractive modern design
- Heavy-duty construction
- Metal case
- Diagnostic LED

DESCRIPTION

The **American Time**® AllSync Plus clocks are provided in round or square metal cases with glass (10" and 12" round) or plexiglass (12" square and 15") crystals and bold, black numerals and minute markers on a non-yellowing white dial. Stylish hour and minute hands are aluminum with a black finish and a red sweep second hand.

The **American Time** AllSync Plus clock is designed to work with multiple master clocks and correction signals. This unit is programmed to identify the signal it receives from the master and operate as that style of clock. Changing clock operation from one style to another is as easy as unplugging the clock from one system and plugging it into another. If needed, changing the placement of two small jumpers on the circuit board can change the voltage required to run this clock from 120vac to 24vac or 24vac to 120vac. This clock provides 15 minutes of backup run power without the use of batteries. If a power outage should last longer than 15 minutes, the clock will synchronize to the master clock at the hourly and 12 hour correction cycles.

Correction Signals

Works on:

- Hourly Correction: 28.75-35 seconds starting at the 59th minute and 30th second. 12 hour correction: 13 minutes and 52 seconds-18 minutes and 8 seconds starting at 5:12:00 (am and pm). Note: This protocol switches off the run line during the hourly correction.

ORDERING INFORMATION

Part #	Description	Part #	Description
U44BHGA404	10" Rd Surface 120vac	U44BHHA404	10" Rd Surface 24vac
U45BHGA?04	10" Rd Flush 120vac	U45BHHA?04	10" Rd Flush 24vac
U54BHGA404	12" Rd Surface 120vac	U54BHHA404	12" Rd Surface 24vac
U55BHGA?04	12" Rd Flush 120vac	U55BHHA?04	12" Rd Flush 24vac
U57BGGA404	12" Sq Surface 120vac	U57BGHA404	12" Sq Surface 24vac
U58BGGA?04	12" Sq Flush 120vac	U58BGHA?04	12" Sq Flush 24vac
U64BGGA404	15" Rd Surface 120vac	U64BGHA404	15" Rd Surface 24vac
U65BGGA?04	15" Rd Flush 120vac	U65BGHA?04	15" Rd Flush 24vac
U53BHGA204	12" Rd Double dial wall 120vac	U53BHHA204	12" Rd Double dial wall 24vac
U52BHGA204	12" Rd Double dial ceiling 120vac	U52BHHA204	12" Rd Double dial ceiling 24vac
U51BGGA204	12" Sq Double dial wall 120vac	U51BGHA204	12" Sq Double dial wall 24vac
U50BGGA204	12" Sq Double dial ceiling 120vac	U50BGHA204	12" Sq Double dial ceiling 24vac
U63BGGA204	15" Rd Double dial wall 120vac	U63BGHA204	15" Rd Double dial wall 24vac
U62BGGA204	15" Rd Double dial ceiling 120vac	U62BGHA204	15" Rd Double dial ceiling 24vac

Note:

Replace the ? in the part number with the number from the list below that will correspond with the system you're replacing. New flush mount installations require backboxes.

- 0 = Faraday 1 = National 5 = Simplex® 6 = Cincinnati/Edwards
7 = 2-hook 8 = Setco 9 = R&H (keyhole)

Also available in Steel Gray. Replace the BH in part number with GH - i.e. U54BHGA404 to U54GHGA404

Note: Personalized dial option available. Add L to the end of the Part #.

BEZEL FINISHES



**Black Sand=BH
Matte finish**



**Steel Gray=GH
Smooth satin finish**

12" Rd only

COMPLIANCE

- FCC Part 15 Class B
- ICES-003

SPECIFICATIONS

- 120vac 50/60 Hz or 24vac 50/60 Hz
- Current draw: Single dial:
 24vac, 1 watt, .043 amps
 120vac, 3 watts, .028 amps
 Double dial:
 24vac, 2 watt, .086 amps
 120vac, 6 watts, .056 amps

Maximum operating voltage: 24vac setting = 32vac
 120vac setting = 140vac
 Minimum operating voltage: 24vac setting = 18vac
 120vac setting = 105vac

GENERAL

Types of secondary clocks compatible with AllSync Plus:
 American Time X* Series
 Standard™ Electric CR & GRC 109106 through 109155 Series
 and 105047 through 105066 Series
 *Indicates more numbers before or after.

OUTSIDE DIMENSIONS

"A" Dimensions: Surface

11¼" for 10" clocks
 13¼" for 12" clocks
 16¼" for 15" clocks

"B" Dimensions: Surface

2¼" for 10", 12" & 15" clocks

"A" Dimensions: Flush

11¼" for 10" clocks
 13¼" for 12" clocks
 16" for 15" clocks

"B" Dimensions: Flush

1⅝" for 10", 12" & 15" clocks

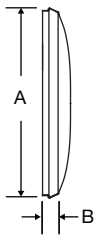
"A" Dimensions: Double dial

13¼" for 12"clocks
 16¼" for 15" clocks

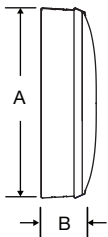
"B" Dimensions: Double dial

16⅞" for 12"clocks
 19⅞" for 15" clocks

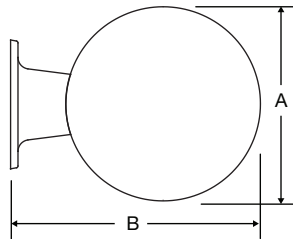
Steel flush mount



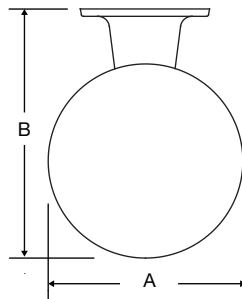
Steel surface mount



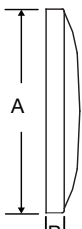
Wall mount round steel double dial



Ceiling mount round steel double dial



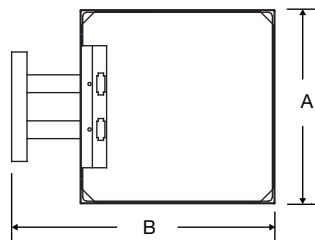
Flush mount steel square



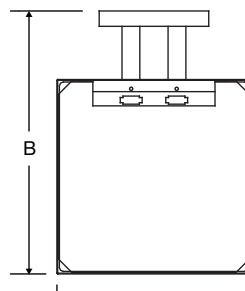
Surface mount steel square



Wall mount steel square double dial mechanical



Ceiling mount steel square double dial mechanical



OUTSIDE DIMENSIONS Square (12" only)

"A" Dimensions: Surface

12⅝" for 12" clocks

"B" Dimensions: Surface

3¼" for 12" clocks

"A" Dimensions: Flush

12⅝" for 12" clocks

"B" Dimensions: Flush

1¼" for 12" clocks

"A" Dimensions: Double dial

12⅝" for 12" clocks

"B" Dimensions: Double dial

17⅞" for 12" clocks

Double dial mounting requires a 4" square electrical box in the wall or ceiling.

At American Time, we continually strive to improve our products to meet our customers' needs and to provide the best possible value. The above specifications are believed to be correct, are subject to change without notice and may otherwise vary from the above. Please call if you need verification of any specifications or the suitability of a particular product for a particular application. © American Time