

**Replacement For Standard™ Electric  
Dual Motor Synchronous–Wired  
Metal Case**  
Manufactured in Dassel, MN



**FEATURES**

- **2 Year Warranty**
- Dual automatic clock correction cycles
  - > Hourly correction
  - > 12-hour scatter correction
- Quality heavy-duty brass gear train
- Precision ‘Hysteresis’ type *Synchron* motor
- Attractive modern design
- Heavy-duty construction
- Metal case
- Double dial mounting

**GENERAL**

**American Time®** Dual Motor Synchronous–Wired clocks are used with the YMP series or AllSync® master clocks to provide continuous accurate time indication. The secondary clocks are provided in round or square, metal cases with glass (10" and 12") or plexiglass (15") crystals and bold black numerals and minute markers printed on a non-yellowing white dial. Stylish minute and hour hands aluminum with a black finish and a red sweep second hand.

**DESCRIPTION**

**American Time** Dual Motor Synchronous clocks use two motors for proper operation. The main drive motor runs the clock and is a 1 RPM motor while the second motor controls the correction and synchronization. This correction motor is 60 RPM. Once each hour the master clock supervises the accuracy of the secondary clocks by issuing an electronic correction signal for the proper duration, which will sync the clocks up to the same minute. Once each hour a 29-second signal is applied to the correction motor line from XX:59:30 to XX:59:59 which will synchronize the minute hands. A 15-minute correction signal on the correction motor will cause a 12-hour correction to occur from 5:12:00 to 5:28:00. This will happen twice daily and will sync all the clocks up to the proper hour. During hourly corrections, power is removed from the run motor. The clocks may be surface, flush or double dial mounted and are available in 10", 12", or 16" round and 12" square. Flush clocks require a flush backbox. Each clock is supplied with a pair of Molex® connectors.

**ORDERING INFORMATION**

Part Numbers	Description		Part Numbers	Description	
X44BHGA404	10" Round Surface	120vac	X44BHHA404	10" Round Surface	24vac
X45BHGA804	10" Round Flush	120vac	X45BHHA804	10" Round Flush	24vac
X54BHGA404	12" Round Surface	120vac	X54BHHA404	12" Round Surface	24vac
X55BHGA804	12" Round Flush	120vac	X55BHHA804	12" Round Flush	24vac
X57BHGA404	12" Square Surface	120vac	X57BHHA404	12" Square Surface	24vac
X58BHGA804	12" Square Flush	120vac	X58BHHA804	12" Square Flush	24vac
X64BGGA404	15" Round Surface	120vac	X64BGHA404	15" Round Surface	24vac
X65BGGA804	15" Round Flush	120vac	X65BGHA804	15" Round Flush	24vac
X53BHGA204	12" Round Double Dial wall	120vac	X53BHHA204	12" Round Double Dial wall	24vac
X52BHGA204	12" Round Double Dial ceiling	120vac	X52BHHA204	12" Round Double Dial ceiling	24vac
X51BHGA204	12" Square Double Dial wall	120vac	X51BHHA204	12" Square Double Dial wall	24vac
X50BHGA204	12" Square Double Dial ceiling	120vac	X50BHHA204	12" Square Double Dial ceiling	24vac
X63BGGA204	15" Round Double Dial wall	120vac	X63BGHA204	15" Round Double Dial wall	24vac
X62BGGA204	15" Round Double Dial ceiling	120vac	X62BGHA204	15" Round Double Dial ceiling	24vac

CFB113 10", 12", 15" Backbox

Double dial mounting to wall requires 4" square electrical box in wall.

**Note:** Personalized dial option available. Add L to the end of the Part #.

**SPECIFICATIONS**

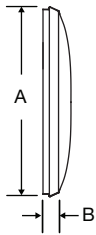
**Run Motor**

24vac 60 Hz 1 rpm .144 amps  
 120vac 60 Hz 1 rpm .033 amps

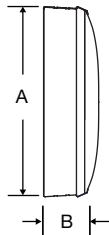
**Reset Motor**

24vac 60 Hz 60 rpm .286 amps  
 120vac 60 Hz 60 rpm .070 amps

Steel flush mount



Steel surface mount



**OUTSIDE DIMENSIONS**

**“A” Dimensions:**

11¼" for 10" clocks  
 13¼" for 12" clocks  
 16¼" for 15" surface clocks  
 16" for 15" flush clocks

**“B” Dimensions: Surface**  
 2¼" for 10", 12", 15" clocks

**“B” Dimensions: Flush**  
 1⅝" for 10", 12", 15" clocks

**Double Dial:**

**Note:** includes 2 surface clocks

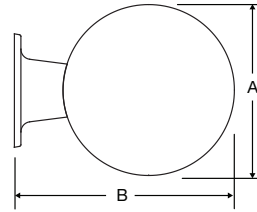
**“A” Dimensions:**

13¼" for 12" clocks  
 16¼" for 15" clocks

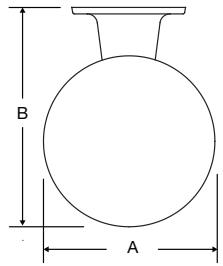
**“B” Dimensions:**  
 16⅞" for 12" clocks  
 19⅞" for 15" clocks

**“C” Dimensions:**  
 8" for 12" & 15" clocks

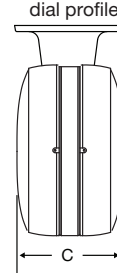
Wall mount round steel double dial



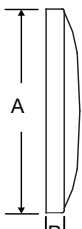
Ceiling mount round steel double dial



Steel double dial profile



Flush mount steel square



Surface mount steel square



**Square 12" only**  
**OUTSIDE DIMENSIONS**  
**Flush**

**“A” Dimensions:**  
 12⅝"

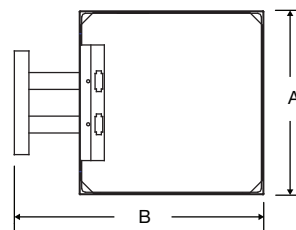
**“B” Dimensions: Surface**  
 3¼"

**“B” Dimensions: Flush**  
 1⅝"

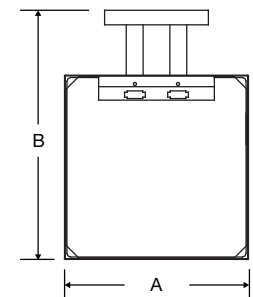
**“B” Dimensions: Double Dial**  
 17⅛"

**“C” Dimensions: Flush**  
 6⅝"

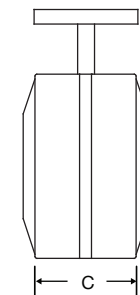
Wall mount steel square double dial mechanical



Ceiling mount steel square double dial mechanical



Steel square double dial profile



At American Time, we continually strive to improve our products to meet our customers' needs and to provide the best possible value. The above specifications are believed to be correct, are subject to change without notice and may otherwise vary from the above. Please call if you need verification of any specifications or the suitability of a particular product for a particular application. © American Time