



FEATURES

- 3 Year Warranty
- Automatically adjusts for Daylight Saving Time changes
- No signals or antennas required
- 120vac
- Heavy-duty all metal bezel
- Durable powder coat finish

GENERAL

The **American Time®** AllSet electric clocks, with automatic DST feature, are ideal for schools, hospitals, and state and federal buildings. Clock bezel is constructed of durable, 21 gauge cold rolled steel, manufactured to specific high quality standards, with a durable powder coat finish. Glass crystal is highly resistant to scratches. Shatter-resistant plexiglass crystals are also available. Customization of dials is available. The hour and minute hands are black aluminum. Sweep second hand is red aluminum.

DESCRIPTION

The AllSet quartz clock movement features a microchip with an internal lithium battery that keeps track of the current date and time. The microchip is programmed to make the daylight saving time changes at 03:00 a.m. Eastern, 02:00 a.m. Central, 01:00 a.m. Mountain and 12:00 a.m. Pacific time twice a year. In the fall, the movement will stop moving the hands for one hour and start ticking again when the clock is on time to adjust from daylight saving time to standard time. In the spring, the movement will advance the hands forward one hour, at an accelerated speed, to achieve the correct daylight saving time.

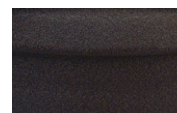
Clocks use a quartz-based electric movement which operates from 120vac for years of maintenance-free operation.

Note: Time must be manually set at startup and after power outages. Internal time/date is only used for moving hands for DST changes.

ORDERING INFORMATION

| Part # | Description |
|------------|---|
| R54BHAV904 | 12" Round surface, Black Sand |
| R54GHAV904 | 12" Round surface, Steel Gray |
| R64BHAV904 | 15" Round surface, Black Sand |
| R52BHAV204 | 12" Round double dial ceiling, Black Sand |
| R52GHAV204 | 12" Round double dial ceiling, Steel Gray |
| R53BHAV204 | 12" Round double dial wall, Black Sand |
| R53GHAV204 | 12" Round double dial wall, Steel Gray |
| R62BHAV204 | 15" Round double dial ceiling, Black Sand |
| R63BHAV204 | 15" Round double dial wall, Black Sand |

BEZEL FINISHES



Black Sand=BH



**Steel Gray=GH
(12" only)**

Double dial mounting requires a 4" square electrical box in the wall or ceiling.

Note: Personalized dial option available. Add L to the end of the Part #.

Note: 15" available in Black Sand only

SPECIFICATIONS

| | |
|--------------------------------|--------------------------------|
| Operating voltage: | 120vac |
| Operating voltage range: | 90-150vac 50/60 Hz |
| Power consumption: | .5 watts |
| Operating temp range: | 14°F to 122°F (-10°C to +50°C) |
| Accuracy: | Typical ± 1 Sec/Day |
| Nominal torque at sweep shaft: | 1.5 g/cm |
| Quartz frequency: | 32.768 kHz |

OUTSIDE DIMENSIONS

"A" Dimensions:

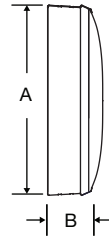
Round

13 $\frac{1}{4}$ " for 12" clocks
16 $\frac{1}{4}$ " for 15" clocks

"B" Dimensions: Surface

2 $\frac{1}{4}$ " for 12" clocks
2 $\frac{1}{4}$ " for 15" clocks

Steel
surface mount



Double Dial:

Note: includes 2 surface clocks

"A" Dimensions:

13 $\frac{1}{4}$ " for 12" clocks
16 $\frac{1}{4}$ " for 15" clocks

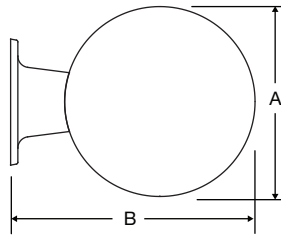
"B" Dimensions:

16 $\frac{7}{8}$ " for 12" clocks
19 $\frac{7}{8}$ " for 15" clocks

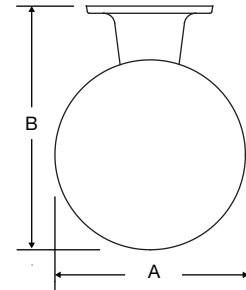
"C" Dimensions:

8" for 12" clocks

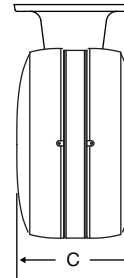
Wall mount round steel
double dial



Ceiling mount round steel
double dial



Steel double
dial profile



At American Time, we continually strive to improve our products to meet our customers' needs and to provide the best possible value. The above specifications are believed to be correct, are subject to change without notice and may otherwise vary from the above. Please call if you need verification of any specifications or the suitability of a particular product for a particular application. © American Time