



AllSet® Electric Clocks Steel Case

AllSet auto daylight saving time electric clocks are ideal for schools, hospitals, state and federal buildings. Clock bezels are constructed of durable, 21 gauge cold rolled steel, manufactured to specific high quality standards, with a durable powder coat finish in two colors. Glass crystal is highly resistant to scratches. Shatter-resistant plexiglass crystals are also available (standard on 12" square and 15" clocks). The hour and minute hands are black aluminum. Sweep second hand is red aluminum. Customization of dials is available.

FEATURES

- 3 Year Warranty
- Automatic adjustment for Daylight Saving Time
- Durable steel case in black or gray
- Powder coat finish
- Convex scratch-resistant glass or shatter-resistant polycarbonate crystal
- Sweep second hand
- Double dial mounting available
- 120vac

SPECIFICATIONS

Operating voltage	120vac
Input voltage range	100V-240V, 50/60Hz, max of 0.8A
Operating temp range	23°F to 122°F (-5°C to +50°C)
Accuracy	±1 Sec/Day (at 1.5V)
Nominal torque at 1.5vdc	2.0 g/cm @ second shaft

DESCRIPTION

The AllSet clock movement features a microchip with an internal battery that keeps track of the current date and time. The microchip is programmed to make daylight saving time changes at 3:00 am Eastern, 2:00 am Central, 1:00 am Mountain, and 12:00 am Pacific time twice per year. In the Spring, the movement will move the hands forward one hour at an accelerated speed. In the Fall, the movement will fast forward the hands and start ticking again when the clock is on time; adjusting back to standard time.

Clocks use a quartz-based movement with AC dongle adapter, which operates from 120vac, for years of maintenance-free clock operation.

Note: Time must be manually set at startup and after replacing the batteries. Internal time/date is only used for moving hands for DST changes.



Bezel Finishes



Black Sand=BH



Steel Gray=GH

12" only

ORDERING INFORMATION

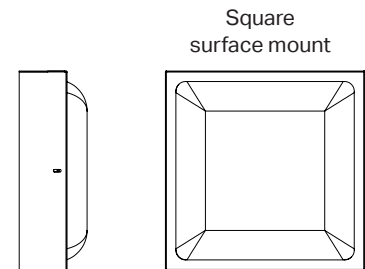
BLACK STEEL CASE – ROUND

Part #	Description	Crystal	Dia.	Depth
R54BHAV989	12" Surface Mount, Dial Style 89	Glass	13¼"	2¼"
R55BHAV?89	12" Flush Mount, Dial Style 89	Glass	13¼"	1⅝"
R53BHAV289	12" Double Dial Wall Mount, Dial Style 89	Glass	13¼"	8"
R52BHAV289	12" Double Dial Ceiling Mount, Dial Style 89	Glass	13¼"	8"
R64BGAV989	15" Surface Mount, Dial Style 89	Poly	16½"	2¼"
R65BGAV?89	15" Flush Mount, Dial Style 89	Poly	16½"	1⅝"
R63BGAV289	15" Double Dial Wall Mount, Dial Style 89	Poly	16½"	8"
R62BGAV289	15" Double Dial Ceiling Mount, Dial Style 89	Poly	16½"	8"
R74BGAV989	18" Surface Mount, Dial Style 89	Poly	19"	3¼"
R84BGAV989	24" Surface Mount, Dial Style 89	Poly	24¼"	4¼"

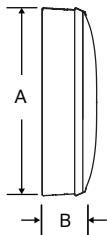
BLACK STEEL CASE – SQUARE

				Sq.
R57BGAV989	12" Surface Mount, Dial Style 89	Poly	13¼"	2½"
R51BGAV289	12" Double Dial Wall Mount, Dial Style 89	Poly	12⅝"	6⅝"
R50BGAV289	12" Double Dial Ceiling Mount, Dial Style 89	Poly	12⅝"	6⅝"

Notes: Change the case color by changing BH/BG (black) in the part number to GH/GG (gray), 12" models only. Double dials available in black only. Double dial mounting requires a 4" square electrical box in the wall or ceiling. If flush mounting in an existing backbox, change the ? in the Model No. to specify correct hanger type from the key: 1=National Time 5=Simplex®, Dukane, Lathem 6=Cincinnati/Edwards, Faraday, Honeywell 8=Standard® Electric Change the 89 in Model # to change the dial style.



Steel surface mount



OUTSIDE DIMENSIONS

"A" Dimensions:
13¼" for 12" clocks
16½" for 15" clocks

"B" Dimensions: Surface
2¼" for 12" & 15" clocks

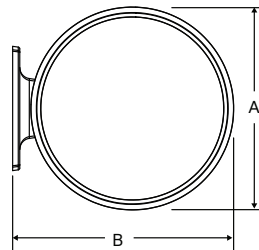
Double Dial:
Note: includes 2 surface clocks

"A" Dimensions:
13¼" for 12" clocks
16½" for 15" clocks

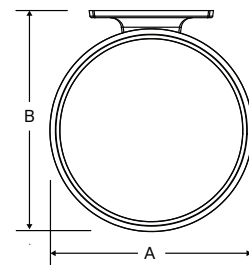
"B" Dimensions:
14¼" for 12" clocks
17¼" for 15" clocks

"C" Dimensions:
8" for 12" & 15" clocks

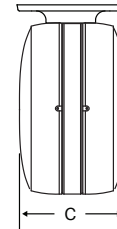
Wall mount round steel double dial



Ceiling mount round steel double dial



Steel double dial profile



At American Time, we continually strive to improve our products to meet our customers' needs and to provide the best possible value. The above specifications are believed to be correct, are subject to change without notice and may otherwise vary from the above. Please call if you need verification of any specifications or the suitability of a particular product for a particular application.

© American Time