



Wireless Analog Steel Case Clocks Electric



FEATURES

- 3 Year Warranty
- Wireless time synchronization
- Ultra-sensitive UHF receiver for facility-wide reception
- Automatic Daylight Saving Time adjustment
- Durable steel case
- Up to one hour of continued operation during power outages

SPECIFICATIONS

Clock hour & minute hands	Black
Clock second hand	Red
Power	120/240vac or 24vac, 50/60 Hz
Remote Receiver	Option for rooms shielded from radio frequencies, such as hospital X-ray rooms. This option uses common RJ11 jacks to terminate both ends of the included 50 foot cable separating the receiver unit from the clock.
Input Voltage Range	120vac/240vac (10v to 240v) 24vac (15v to 30v)
Current draw	5mA (120vac) 3mA (240vac) >80mA (24vac)
Plug	120vac/240vac - 10A 125v 2 prong polarized plug, 6 ft. cord 24vac - 4 position Molex* connector
Rear panel indicator	Red LED indicates receiver is synchronizing to master time Green LED indicates power applied
Receiver sensitivity	10uV per meter
Antenna type	External
Time to synchronize	Initial sync time is 5-10 minutes
Time accuracy	±1 second to SiteSync IQ* Master Clock
Reset button	Press for 5 seconds to force time sync
Operating temperature	41°F to 131°F
Storage temperature	41°F to 131°F
Relative humidity	0% - 95% Non-condensing



ORDERING INFORMATION

Part #	Description	Part #	Description
SQ44BHAD904	10" Round, surface mount, 120/240vac	SQ44BHBD904	10" Round, surface mount, 24vac
SQ45BHAD?04	10" Round, flush mount, 120/240vac	SQ45BHBD?04	10" Round, flush mount, 24vac
SQ54??AD904	12" Round, surface mount, 120/240vac	SQ54??BD904	12" Round, surface mount, 24vac
SQ55??AD?04	12" Round, flush mount, 120/240vac	SQ55??BD?04	12" Round, flush mount, 24vac
SQ57BGAD904	12" Square, surface mount, 120/240vac	SQ57BGBD904	12" Square, surface mount, 24vac
SQ58BGAD?04	12" Square, flush mount, 120/240vac	SQ58BGBD?04	12" Square, flush mount, 24vac
SQ53??AD204	12" Round, double dial, wall mount, 120/240vac	SQ53??BD204	12" Round, double dial, wall mount, 24vac
SQ52??AD204	12" Round, double dial, ceiling mount, 120/240vac	SQ52??BD204	12" Round, double dial, ceiling mount, 24vac
SQ64??AD904	15" Round, surface mount, 120/240vac	SQ64??BD904	15" Round, surface mount, 24vac
SQ65BGAD?04	15" Round, flush mount, 120/240vac	SQ65BGBD?04	15" Round, flush mount, 24vac
SQ63??AD204	15" Round, double dial wall mount, 120/240vac	SQ63??BD204	15" Round, double dial, wall mount, 24vac
SQ62??AD204	15" Round, double dial ceiling mount, 120/240vac	SQ62??BD204	15" Round, double dial, ceiling mount, 24vac

Other dial styles available. Change the 04 in the part number to change the dial style.

Note: Replace the ?? in the part # with the 2 letter code for the bezel finish. See colors below.
BH=Black Sand GH=Steel Gray All 10" & 15" flush available in Black Sand only.

Note: If flush mounting in an existing backbox, change the ? in the Model No. to specify correct hanger type from the list below:
1=National Time 5=Simplex, Dukane, Lathem 6=Cincinnati/Edwards, Faraday, Honeywell 8=Standard™ Electric

Note: For plexiglass lens, replace the ?? or the BH in the part # with the 2 letter code for the bezel finish. Additional cost.
BG=Black Sand with plexiglass lens GG=Steel Gray with plexiglass lens
All 10" & 15" flush Black Sand only.

Note: Add L to the end of the Part # for personalized dial option
Add RT to the end of Part # for the 25' remote receiver option
Add RF to the end of Part # for the 50' remote receiver option
Add Y to the end of the Part # for special frequency.
Add X to the end of the Part # for special options.
Contact Customer Service for details: **800-328-8996**.

Note: These clocks are intended for use with a SiteSync IQ Wireless Clock System.

BEZEL FINISHES



Black Sand=BH
Matte finish



Steel Gray=GH
Smooth satin finish

OUTSIDE DIMENSIONS

ROUND

"A":
11¹/₄" for 10" clocks

13¹/₄" for 12" clocks

16¹/₄" for 15" clocks

"B" Surface:

2¹/₄" for all clocks

"B" Flush:

1⁵/₈" for all clocks

"B" Double dial:

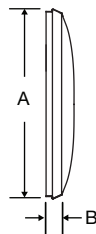
14³/₈" for 12" clocks

17¹/₈" for 12" clocks

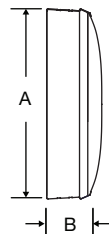
"C" Double dial:

8" for 12" & 15" clocks

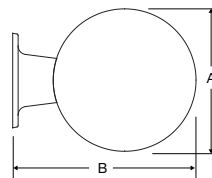
Steel
flush mount



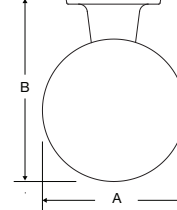
Steel
surface mount



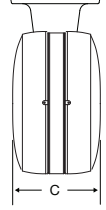
Wall mount round steel
double dial



Ceiling mount round steel
double dial



Steel double
dial profile



OUTSIDE DIMENSIONS

12" SQUARE

"A" 12⁵/₈"

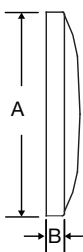
"B" Surface: 3¹/₈"

"B" Flush: 1¹/₈"

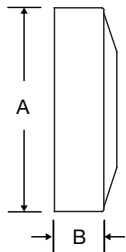
"B" Double dial: 17¹/₈"

"C" Double dial: 6⁵/₈"

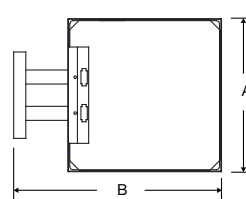
Flush mount
steel square



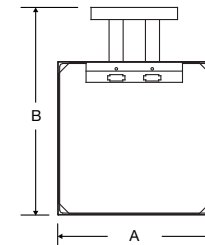
Surface mount
steel square



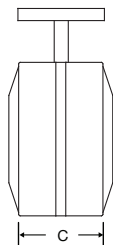
Wall mount steel square
double dial mechanical



Ceiling mount steel square
double dial mechanical



Steel square
double dial profile



At American Time, we continually strive to improve our products to meet our customers' needs and to provide the best possible value. The above specifications are believed to be correct, are subject to change without notice and may otherwise vary from the above. Please call if you need verification of any specifications or the suitability of a particular product for a particular application.

© American Time