



Wi-Fi Analog Electric Buzzer Clocks



The American Time Wi-Fi analog buzzer clock is an indoor device that can be managed through the inCloud Management Portal. Wi-Fi buzzer clocks are triggered by programmed events in the inCloud schedule dashboard.

FEATURES

- 3 Year Warranty
- Schedule with inCloud Management Portal

SPECIFICATIONS

Clock size options	10", 12", 15"
Clock weights	Plastic (10" – 1lb), (12" – 1.5lbs), (15" – 2lbs) Steel (12" flush – 3.75lbs), (12" surface – 4lbs)
Clock case options	Black plastic or steel
Mounting options	Surface or flush
Clock crystal	Polycarbonate
Current draw options	120VAC - 4.9 mA (max), 2.3 mA (ave - hourly sync) 24VAC - 10.2 mA (max), 9.3 mA (ave - hourly sync) 220vVAC - 2.3 mA (max), 1.3 mA (ave - hourly sync)
Input voltage range	120VAC/240VAC (110v to 240v) 24VAC (15v to 30v)
Plug options	120VAC - 10A, 125v 2-prong plug, 6 ft. cord 24VAC - 4 position Molex®
Sound level	65 dBA at 10ft.
Wi-Fi	802.11n (802.11b/g compatible, 2.4 GHz only)
Supported data rates	72, 65, 43, 29, 22, 14, 7 Mbps (802.11n) 54, 48, 36, 24, 18, 12, 9, 6 Mbps (802.11g) 11, 5.5, 2, 1 Mbps (802.11b)
Security protocols	WEP, WPA/WPA2 and Enterprise (PEAPv0-MSCHAPv2)
Configuration	Clocks are pre-configured for plug-n-play installation (standard) or individually configured via Network Clock Setup App, or Wi-Fi client through web page interface. Supports DHCP or static IP addressing.
Rear panel indicator	Red, orange and green LED indicates mode status
Antenna type	Internal
Time synchronization	Average time on the network is typically less than 10 seconds. Sync frequency is programmable from 1-12 hours. Staggered synchronization for unnoticeable network load with multiple clocks. Clock will display correct time within 10 minutes of applying power. Automatically adjusts for Daylight Saving Time changes.
Time accuracy	±1 second to SNTP time server. Supports two static IP address time servers for redundancy or pool SNTP domain names.
Operating/storage temperature	41°F to 131°F
Relative humidity	0% - 95% Non-condensing
Management & Scheduling	inCloud management portal (Only through subscription)

COMPLIANCE

- FCC Part 15 Class B
- ICES-003
- RoHS

ORDERING INFORMATION

See our website for available model numbers. Contact American Time for additional bezel material options and clock sizes. Call 800.328.8996 for details.

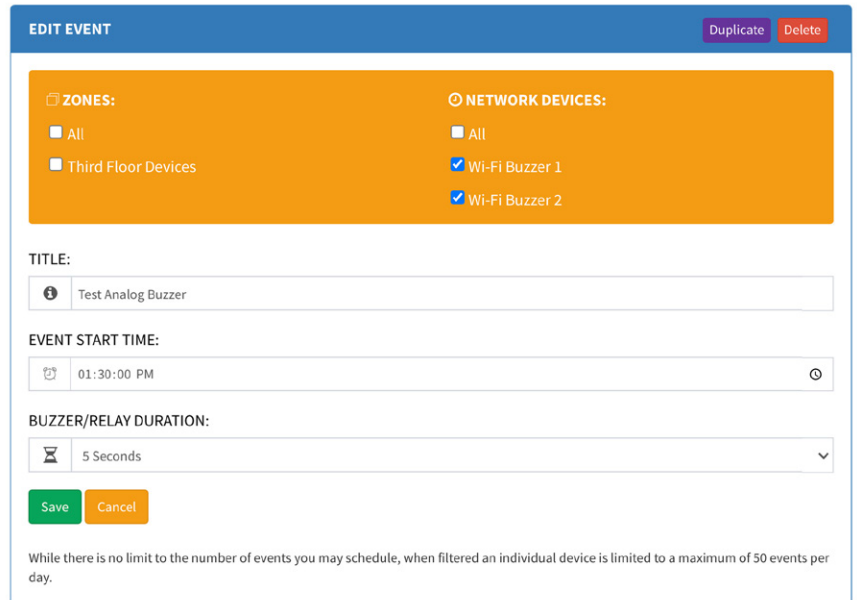


Buzzer

inCloud Management Portal Event Scheduling

Buzzer clocks are Wi-Fi devices that are activated on the inCloud Management Portal. They are programmed by creating an event through the Schedule Dashboard and selected by group selection (Zones) or individually.

OUTSIDE DIMENSIONS

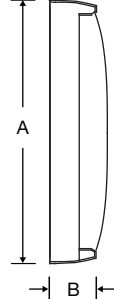


SIZE	A	B
Surface mount plastic		
10"	10 ³ / ₈ "	2 ¹ / ₂ "
12"	13 ¹ / ₄ "	2 ¹ / ₂ "
15"	16"	2 ¹ / ₂ "
Flush mount plastic		
12"	13 ¹ / ₄ "	2"
Surface mount steel		
12"	13 ¹ / ₄ "	2 ¹ / ₄ "
Flush mount steel		
12"	13 ¹ / ₄ "	1 ⁵ / ₈ "

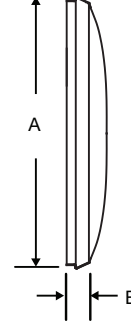
Flush mount plastic



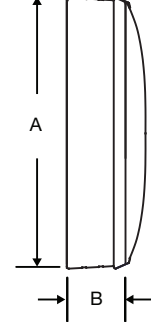
Surface mount plastic



Flush mount steel



Surface mount steel



At American Time, we continually strive to improve our products to meet our customers' needs and to provide the best possible value. The above specifications are believed to be correct, are subject to change without notice and may otherwise vary from the above. Please call if you need verification of any specifications or the suitability of a particular product for a particular application.

© American Time