



Cincinnati Replacement Impulse Clocks Metal Case

The American Time® 2- or 3-wire Impulse corrective clocks are used with the AllSync IQ® system controller to provide continuous accurate time indication. The secondary clocks are provided in round or square metal cases with glass crystals (plexiglass crystals standard on 15" clocks) and bold, black numerals and minute markers on a non-yellowing white dial. Traditional hour and minute hands are aluminum with a black finish. Clocks are provided with mating Molex connectors.

FEATURES

- 2 Year Warranty
- Individual automatic supervision
- Hourly only or Hourly/12-hour correction
- Quality 24VDC impulse movement
- Modern design
- Heavy-duty construction
- Black steel case
- Glass crystal (10", 12" round)
- Poly crystal (12" square, 15" round)

DESCRIPTION

Impulse clocks may be surface, flush or double dial mounted and are available in 10", 12", or 15" round and 12" square models. The 2- or 3-wire minute impulse secondary clock receives an electric impulse from the master clock once each minute advancing it one minute. Each hour, rapid impulses are emitted from the master clock to the secondary clocks to provide hourly supervision of all secondary clocks. The hourly correction function will adjust secondary clocks which are up to 20 minutes slow or up to 10 minutes fast. In the event of a power failure in excess of 58 minutes, the 12-hour correction will automatically advance all secondary clocks to the correct time once power resumes. Flush mount clocks require a flush backbox.

ELECTRICAL REQUIREMENTS

24vdc Correction .067 amps

ORDERING INFORMATION

| Description | Original # | 2-Wire Hourly, D3 Model, Reverse polarity | 3-Wire Hourly, D4 Model | 2-Wire Hourly/12-Hour D6 Model, Reverse polarity |
|-------------------------------|------------|---|-------------------------|--|
| 10" Round Surface | 3009 | B44BHFF406 | B44BHJF406 | B44BHFG406 |
| 10" Round Flush | 4009 | B45BHFF606 | B45BHJF606 | B45BHFG606 |
| 12" Round Surface | 3012 | B54BHFF406 | B54BHJF406 | B54BHFG406 |
| 12" Round Flush | 4012 | B55BHFF606 | B55BHJF606 | B55BHFG606 |
| 12" Round Double Dial Wall | 3012DDW | B53BHFF206 | B53BHJF206 | B53BHFG206 |
| 12" Round Double Dial Ceiling | 3012DDC | B52BHFF206 | B52BHJF206 | B52BHFG206 |
| 12" Square Surface | 8012 | B57BGFF406 | B57BGJF406 | B57BGFG406 |
| 12" Square Flush | 9012 | B58BGFF606 | B58BGJF606 | B58BGFG606 |
| 15" Round Surface | 3015 | B64BGFF406 | B64BGJF406 | B64BGFG406 |
| 15" Round Flush | 4015 | B65BGFF606 | B65BGJF606 | B65BGFG606 |
| 15" Round Double Dial Wall | 3015DDW | B63BGFF206 | B63BGJF206 | B63BGFG206 |
| 15" Round Double Dial Ceiling | 3015DDC | B62BGFF206 | B62BGJF206 | B62BGFG206 |

For flush-mount clocks, use **CFB106** 12", 15" backbox. Double dial mounting requires a 4" square electrical box.

Notes: Personalized dial option available. Add L to the end of the Part #.



OUTSIDE DIMENSIONS

Round

"A" Dimensions:

11 $\frac{1}{4}$ " for 10" clocks

13 $\frac{1}{4}$ " for 12" clocks

16 $\frac{1}{4}$ " for 15" clocks

"B" Dimension: Surface

2 $\frac{1}{4}$ " for 10", 12", 15"

"B" Dimension: Flush

1 $\frac{5}{8}$ " for 10", 12", 15"

Double Dial:

Includes 2 surface clocks

"A" Dimensions:

13 $\frac{1}{4}$ " for 12" clocks

16 $\frac{1}{4}$ " for 15" clocks

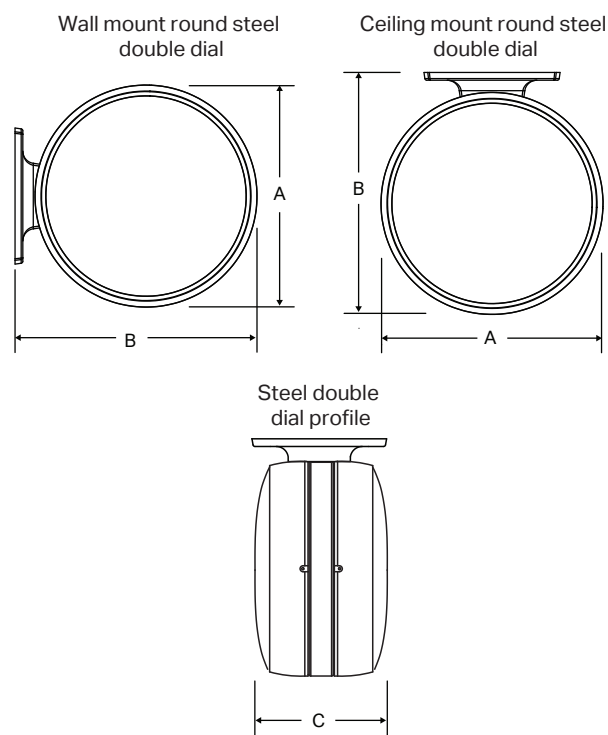
"B" Dimensions:

16 $\frac{7}{8}$ " for 12" clocks

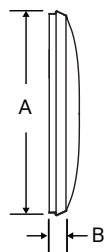
19 $\frac{7}{8}$ " for 15" clocks

"C" Dimensions:

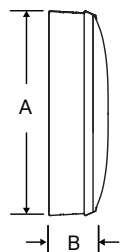
8" for 12" & 15" clocks



Steel
flush mount



Steel
surface mount



OUTSIDE DIMENSIONS

Square, 12" only

"A" Dimension: 12 $\frac{5}{8}$ "

"B" Dimension: Surface 3 $\frac{1}{4}$ "

"B" Dimension: Flush 1 $\frac{5}{8}$ "

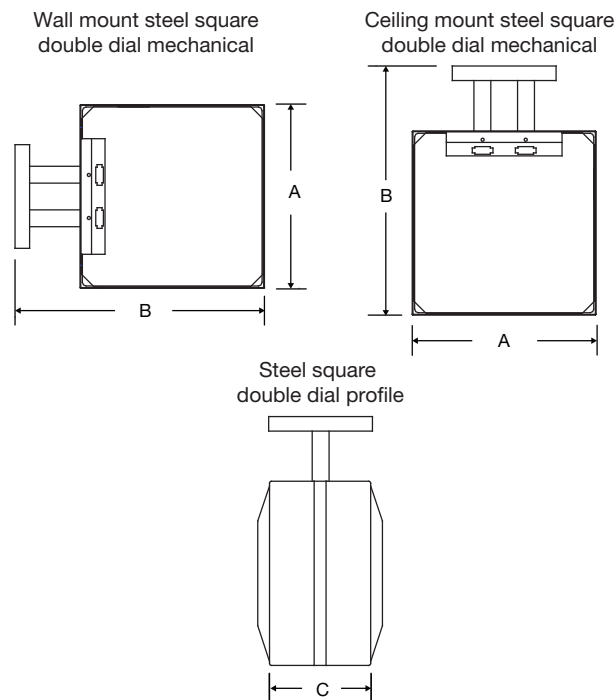
Double Dial:

Includes 2 surface clocks

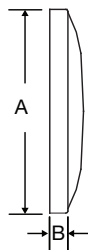
"A" Dimension: 12 $\frac{5}{8}$ "

"B" Dimension: 17 $\frac{1}{8}$ "

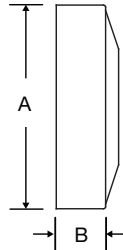
"C" Dimension: 6 $\frac{5}{8}$ "



Flush mount
steel square



Surface mount
steel square



At American Time, we continually strive to improve our products to meet our customers' needs and to provide the best possible value. The above specifications are believed to be correct, are subject to change without notice and may otherwise vary from the above. Please call if you need verification of any specifications or the suitability of a particular product for a particular application.

© American Time