

**Impulse Clocks
2 or 3-Wire
Hourly & 12 Hour Corrective
Metal Case**
Manufactured in Dassel, MN



FEATURES

- **2 Year Warranty**
- Individual automatic supervision
- Hourly & 12 Hour correction
- Quality impulse movement
- Attractive modern design
- Heavy-duty construction
- Metal case
- Double dial mounting

GENERAL

The **American Time™** Impulse corrective clocks are used with the AllSync IQ® master clocks to provide continuous accurate time indication. The secondary clocks are provided in round or square powder coated metal bezels with glass (12" and 18" clocks) or plexiglass (15" clocks) crystals and bold, black numerals and minute markers on a non-yellowing white dial. Stylish hour and minute hands are aluminum with a black finish.

DESCRIPTION

American Time™ clocks may be surface, flush or double dial mounted and are available in 12", 15" or 18" round and 12" square sizes. The 2 or 3-wire minute impulse secondary clock receives an electric impulse from the master clock once each minute advancing it one minute. Each hour, rapid impulses are emitted from the master clock to the secondary clock system by means of a third wire to provide hourly supervision of all secondary clocks. The hourly correction function will adjust secondary clocks, which are up to 20 minutes slow or up to 10 minutes fast. In the event of a power failure in excess of 58 minutes, the 12-hour correction will automatically advance all secondary clocks to the correct time upon resumption of power. Flush mount clocks require a flush backbox.

ORDERING INFORMATION

2-Wire Clocks - 24vdc

Part #	Description
A54BHFG422	12" Rd Surface
A64BGFG422	15" Rd Surface
A74BHFG422	18" Rd Surface
A57BHFG422	12" Sq Surface
A55BHFG522	12" Rd Flush
A65BGFG522	15" Rd Flush
A75BHFG522	18" Rd Flush
A58BHFG522	12" Sq Flush
A53BHFG222	12" Rd Double dial wall
A52BHFG222	12" Rd Double dial ceiling
A63BGFG222	15" Rd Double dial wall
A62BGFG222	15" Rd Double dial ceiling

3-Wire Clocks - 24vdc

Part #	Description
A54BHJG422	12" Rd Surface
A64BGJG422	15" Rd Surface
A74BHJG422	18" Rd Surface
A57BHJG422	12" Sq Surface
A55BHJG522	12" Rd Flush
A65BGJG522	15" Rd Flush
A75BHJG522	18" Rd Flush
A58BHJG522	12" Sq Flush
A53BHJG222	12" Rd Double dial wall
A52BHJG222	12" Rd Double dial ceiling
A63BGJG222	15" Rd Double dial wall
A62BGJG222	15" Rd Double dial ceiling

CFB104 Backbox for flush mounting (12", 15" and 18")

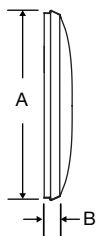
Double dial mounting to wall requires 4" square electrical box in wall.

SPECIFICATIONS

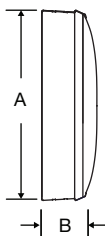
Electrical requirements:

24vdc Correction .067 amps.

Steel
flush mount



Steel
surface mount



OUTSIDE DIMENSIONS

"A" Dimensions:

13 $\frac{1}{4}$ " for 12" clocks
16 $\frac{1}{4}$ " for 15" surface clocks
16" for 15" flush clocks
19" for 18" clocks

"B" Dimensions: Surface

2 $\frac{1}{4}$ " for 12", 15"
3 $\frac{1}{4}$ " for 18" clocks

"B" Dimensions: Flush

1 $\frac{5}{8}$ " for 12", 15"
1 $\frac{7}{8}$ " for 18" clocks

Double Dial:

Note: includes 2 surface clocks

"A" Dimensions:

13 $\frac{1}{4}$ " for 12" clocks
16 $\frac{1}{4}$ " for 15" clocks

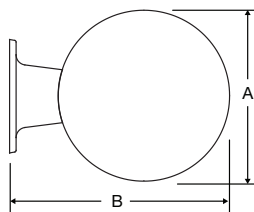
"B" Dimensions:

16 $\frac{7}{8}$ " for 12" clocks
19 $\frac{7}{8}$ " for 15" clocks

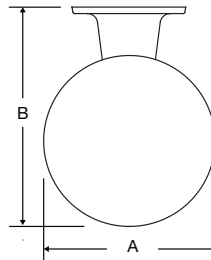
"C" Dimensions:

8" for 12" & 15" clocks

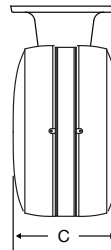
Wall mount round steel
double dial



Ceiling mount round steel
double dial



Steel double
dial profile



Flush mount
steel square



Surface mount
steel square



Square 12" only OUTSIDE DIMENSIONS

Flush

"A" Dimensions:

12 $\frac{5}{8}$ "

"B" Dimensions: Surface

3 $\frac{1}{4}$ "

"B" Dimensions: Flush

1 $\frac{5}{8}$ "

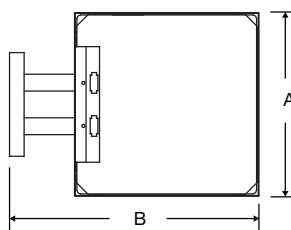
"B" Dimensions: Double Dial

17 $\frac{1}{8}$ "

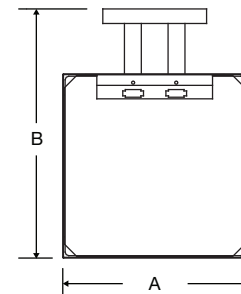
"C" Dimensions: Flush

6 $\frac{5}{8}$ "

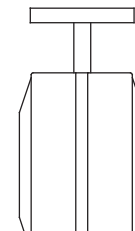
Wall mount steel square
double dial mechanical



Ceiling mount steel square
double dial mechanical



Steel square
double dial profile



At American Time, we continually strive to improve our products to meet our customers' needs and to provide the best possible value. The above specifications are believed to be correct, are subject to change without notice and may otherwise vary from the above. Please call if you need verification of any specifications or the suitability of a particular product for a particular application.

© American Time